

Dissemination & Implementation (D&I) Research Core

Bethany Kwan, PhD, MSPH
Director, CCTSI D&I
Research Core

cctsi.cuanschutz.edu

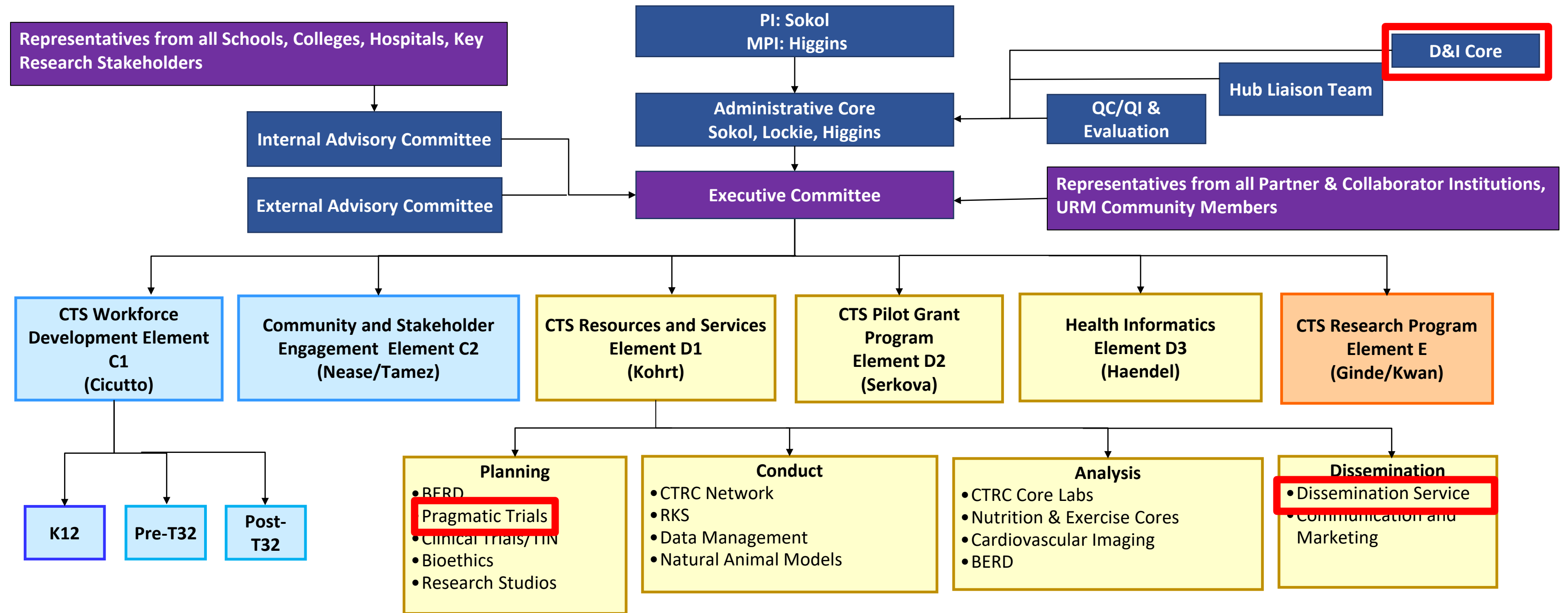


Colorado Clinical and Translational
Sciences Institute (CCTSI)

UNIVERSITY OF COLORADO DENVER | ANSCHUTZ MEDICAL CAMPUS



Integration Across CCTSI



CCTSI D&I Team & Diversity



Bethany Kwan,
PhD, MSPH
Director



Heather Gilmartin,
PhD, NP
Associate Director
Dissemination
Service



Demetria McNeal
PhD, MBA, CPTD
Associate Director
Scale-Up &
Sustainability



Lindsay Lennox
Program Manager



Justin Shrader
Program
Coordinator

D&I RESEARCH CORE

80% Female/nonbinary ~ 60% PhD/other ~ 1 URM Community Representative
Representation across: School of Medicine (ACCORDS; Dept. of Emergency Medicine), Rocky Mountain Regional VA Medical Center, Colorado School of Public Health (Dept. of Health Systems, Management and Policy)



Strategic Goals

- 1. Goal:** Integrate D&I systems, methods, & principles across all CCTSI components.
- 2. Goal:** Support and build capacity for use of D&I science methods for all CCTSI member and partners.
- 3. Goal:** Lead and participate in national CTSA Consortium D&I working group and cross-CTSA grants, papers, and projects.



Health Equity Goals

1

Designing for Equity

We will support use of health equity-oriented D&I frameworks in research

2

Community-Engaged D&I

We will provide training and resources to support community engagement principles and methods in D&I research



Year 1 Progress & Impact

- In Year 1, the D&I research core focused on:



Building new collaborations and increasing integration of D&I throughout the CCTSI



Supporting CCTSI investigator needs

Year 1 Progress – Collaboration & Integration

- Increased integration of D&I science and practice into **CCTSI Research Studios** and began planning for a pilot **Dissemination Studio** concept
- Launched **D&I research roundtable series** with existing and emerging CCTSI partner groups
- Partnered with ACCORDS for two-day virtual **D&I Science for Researchers Workshop** in November 2023; provided 10 D&I science consults and collaborations (in partnership with ACCORDS)

Dissemination and Implementation Science for Researchers
Interested in D&I Science and looking for a convenient way to start learning more?
The ACCORDS D&I Science Program and Education Program at CU Anschutz are here to meet that need!

WHOSHOULDATTEND?
Researchers seeking training in D&I science will benefit from this workshop (faculty, post-doctoral fellows, graduate students, and others).

WHAT WILL BE COVERED?

- What is D&I science & why is it important?
- D&I terminology
- D&I theories, models, and frameworks
- D&I study designs
- Implementation strategies
- Assessment approaches
- Partner engagement in D&I
- Designing for dissemination & sustainability
- D&I and health equity
- Resources for D&I

FACULTY INCLUDE:

Meredith Fort, PhD, MPH
Russ Glasgow, PhD
Jodi Holtrop, PhD, MCHES
Amy Huebschmann, MD, MSc
Mónica Pérez Jolles, PhD
Bethany Kwan, PhD, MSPH
Dan Matlock, MD
Katy Trinkley, PharmD, PhD
...and more!

CO-FACILITATED BY:

Tina Studts, PhD, MSW, MSPH & Borsika Rabin, PhD, PharmD, MPH
ACCORDS D&I Science Graduate Certificate Program

Register here for:

1½ DAYS OF LIVE, LECTURE SESSIONS
Nov. 9, 9am-3pm MT
Nov. 16, 9am-12pm MT

Led by our D&I Science program faculty, these live, online sessions will provide a thorough introduction to D&I Science. Experts in the field will teach all topics and answer your questions.

½ DAY OF SMALL GROUP INTENSIVES
Nov. 16, 12pm-3pm MT

These online small group sessions will focus on your questions and your research in a supportive and informative environment with peers. Get expert feedback on your aims, frameworks, and methods; learn from others' questions and work; and build your D&I Science network!

Note: Small group intensives are additional, limited in space, and require an application.

Questions?
Email ACCORDS.Education@cuanschutz.edu
or [visit our website](#)



Year 1 Progress – Collaboration & Integration

- Collaborated with Evaluation/Health Informatics to establish **novel data systems for assessing impact of clinical and translational science**
- Began resource cataloging effort for **pragmatic research navigation unit**
- Led CLSC graduate course **Designing for Dissemination, Sustainability, and Equity**, a core course for the D&I certificate program
- Conducted five national webinars/lectures on D&I science

CCTSI Pragmatic Trials Navigation Service: Resource Suggestion Form

The Pragmatic Trials Navigation Service maintains a catalogue of research resources and services available at CU Anschutz and CCTSI partner institutions to investigators who are planning or conducting pragmatic research. Please use this form to suggest new resources to include in Pragmatic Research Catalogue. Submissions sent thru this form will be reviewed by the CCTSI Pragmatic Trials Navigation Service and added to the catalog as appropriate. If the reviewers have questions about your suggested resource, we will contact you via email.

Resources submitted should be relevant to the **design and conduct of pragmatic research**: a wide spectrum of research ranging from pragmatic clinical trials (focusing on testing interventions and procedures at the patient level) to testing interventions and models of care at the practice and system level, with consideration of health system and policy context. Resources could include biostatistics and study design, technology integration, data and informatics tools, D&I science, qualitative and mixed methods, partnership development, community and stakeholder engagement, or other resources.

Questions about this form? Email lindsay.lennox@cuanschutz.edu.

* Required

1. Contact Name

* [📧]

Enter your answer

2. Contact Email

* [📧]

Enter your answer

3. Name of Suggested Resource

* [📧]

Enter your answer

4. Please suggest a category/categories for your resource:

* [📧]

Biostatistics and study design

Data and informatics tools

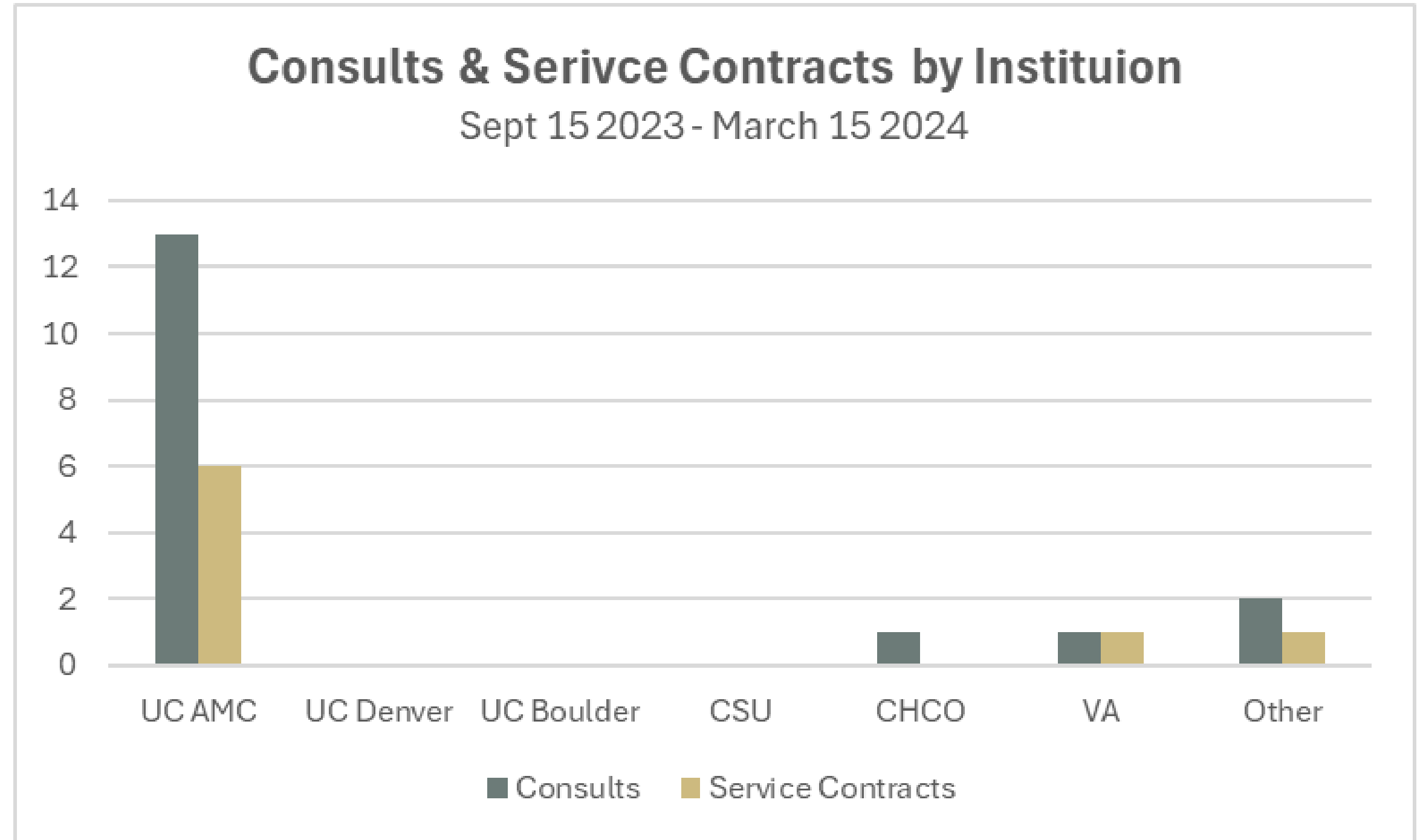
Qualitative or mixed-methods resources

Technology integration



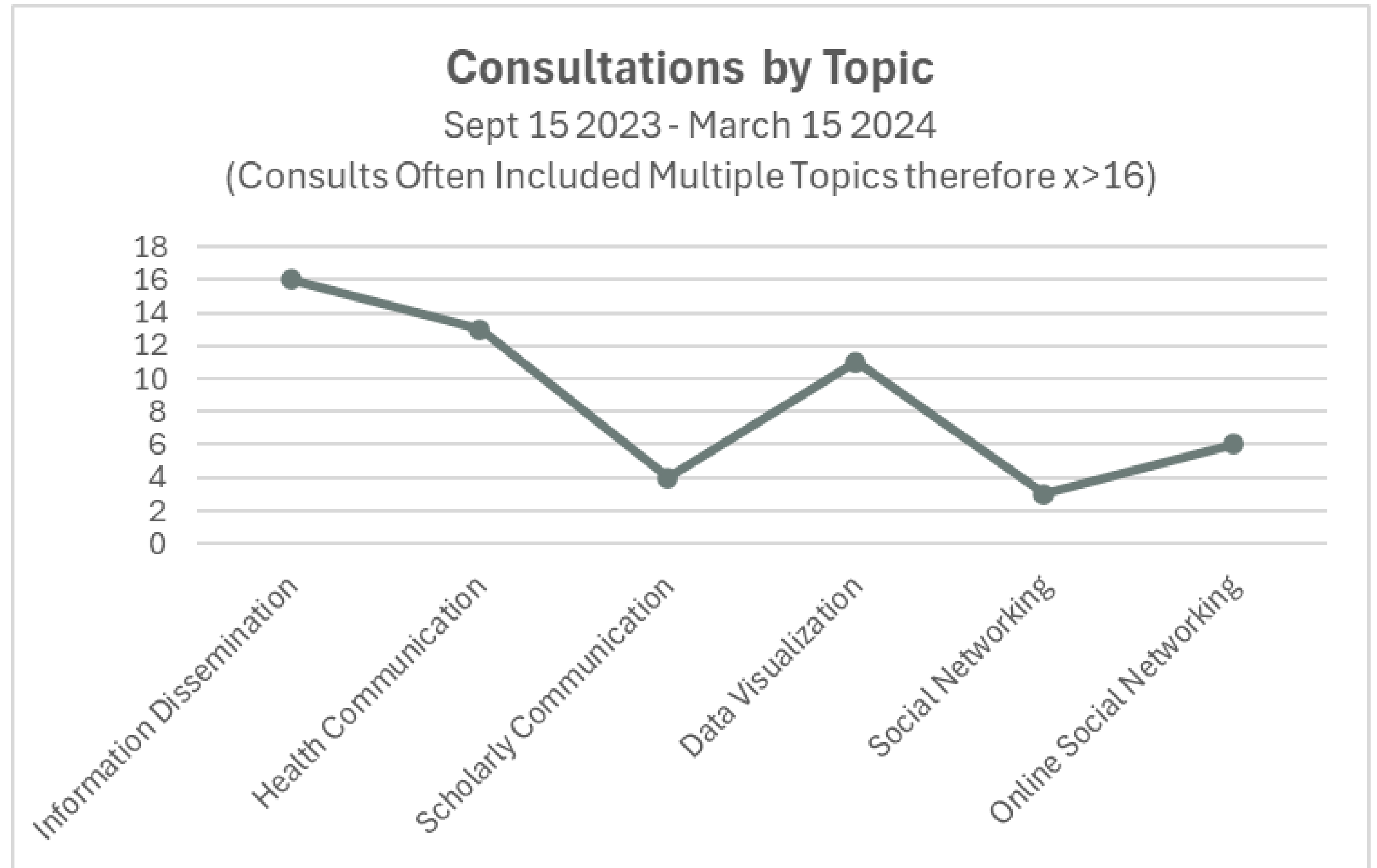
Year 1 Progress – Supporting investigator needs

- Conducted **16 free dissemination consultations**, leading to **7 fee-for-service dissemination contracts**



Year 1 Progress – Supporting investigator needs

- Conducted **16 free dissemination consultations**, leading to **7 fee-for-service dissemination contracts**



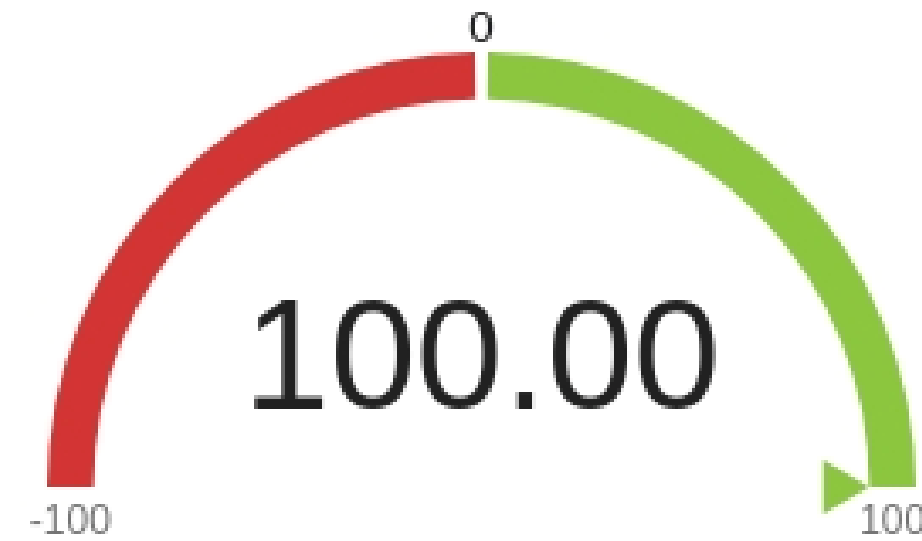
Year 1 Progress – Supporting investigator needs

- Conducted **16 free dissemination consultations**, leading to **7 fee-for-service dissemination contracts**

Net Promoter Score

Sept 15, 2023 – March 15, 2024

How likely is it that you would recommend the CCTSI dissemination service to a friend or colleague?



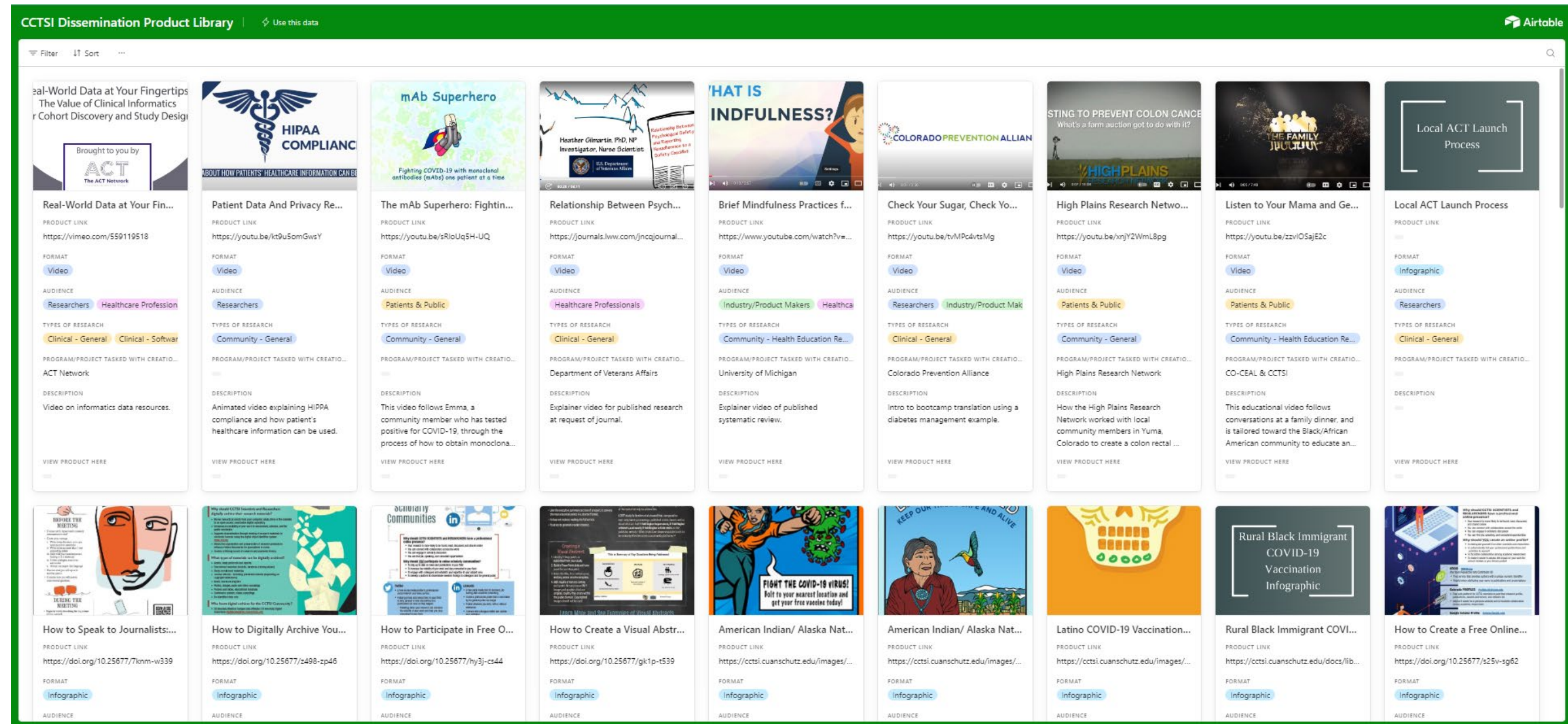
Responses: 5/16

Response rate: 31.25%



Year 1 Progress – Supporting investigator needs

- Developed the **Dissemination Product Library**, a visual repository aiming to inspire and provide guidance for CCTSI investigators in crafting their own dissemination materials.



Year 2 Plans

Expand opportunities for integration and collaboration, both within and beyond CCTSI:

- Partner with Evaluation/Health Informatics to develop a strategy to **assess impact of CTS**
- Conduct pilot **Dissemination Studio**; provide D&I expertise through existing **Research Studio** model; explore opportunities within CCTSI to **enhance D&I capacity**
- Conduct additional **D&I research roundtables** with CCTSI affiliate partner institutions
- Launch **pragmatic research navigation unit** resources



Response to EAC Critiques

1. The relationship between CSU Fort Collins and CCTSI has strong benefits. Consider expanding the reach and depth of the partnership with CSU to include the full breadth of the program, across all modules of the CCTSI.

The D&I collaborated with CSU to present the 2023 CU-CSU summit, and will conduct a D&I research roundtable in April 2024 to identify opportunities to build D&I capacity and increase integration.

2. Are other partners of the CCTSI as well developed as CSU? It would appear that other hospital and health system partnerships are fully integrated but beyond numeric measures, the breadth of these partnerships was not clear.

The D&I core has launched a series of D&I research roundtables designed to identify near-term opportunities to increase D&I capacity and integration at other CCTSI partner organizations, beginning with Denver Health in March 2024.



Questions for EAC

- 1. We are exploring opportunities for assessing impact of CTS using the TSBM. Beyond a potential collaboration with Duke (e.g., adopting TRACER), how are other CTSAs accomplishing this task?**

