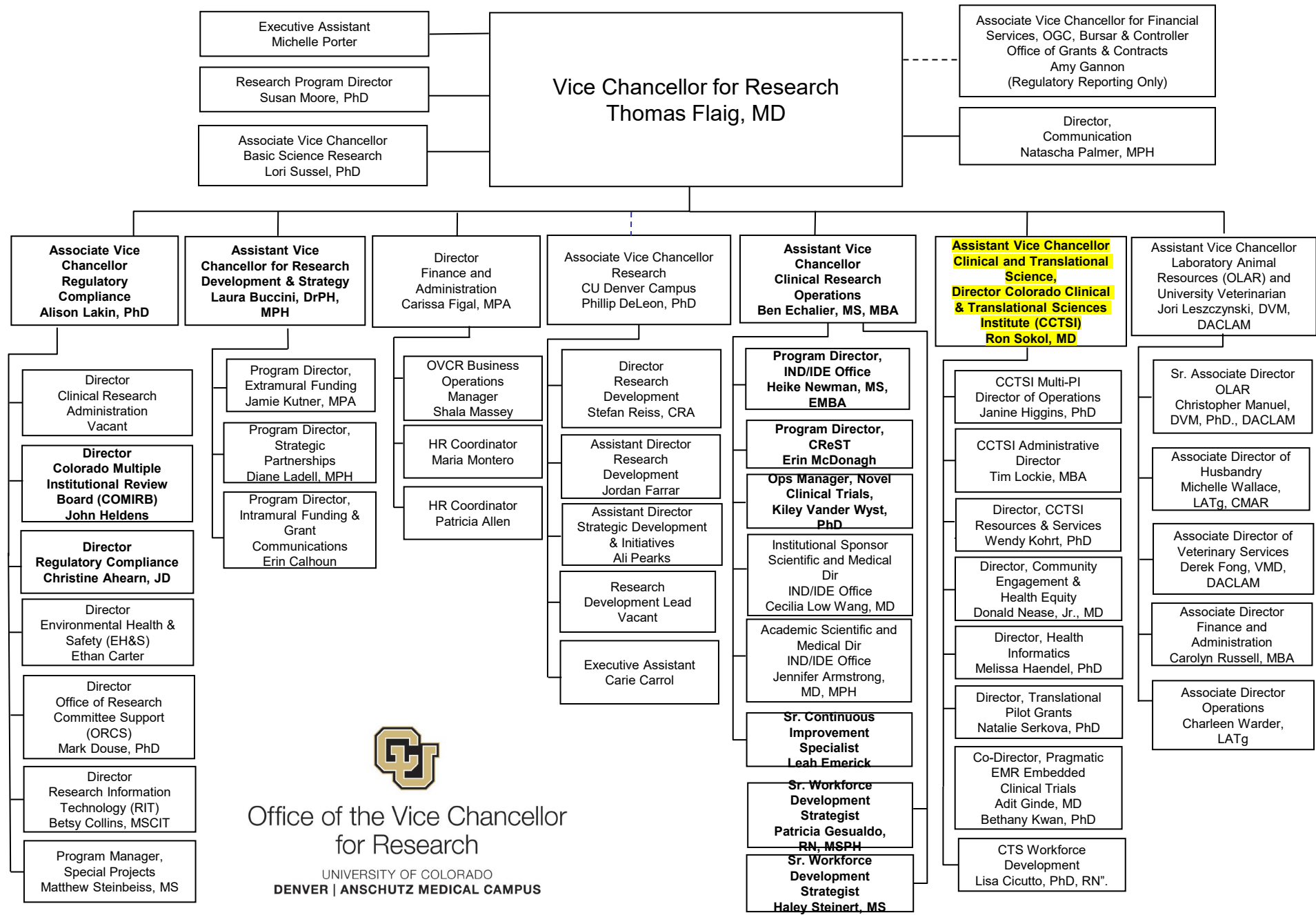


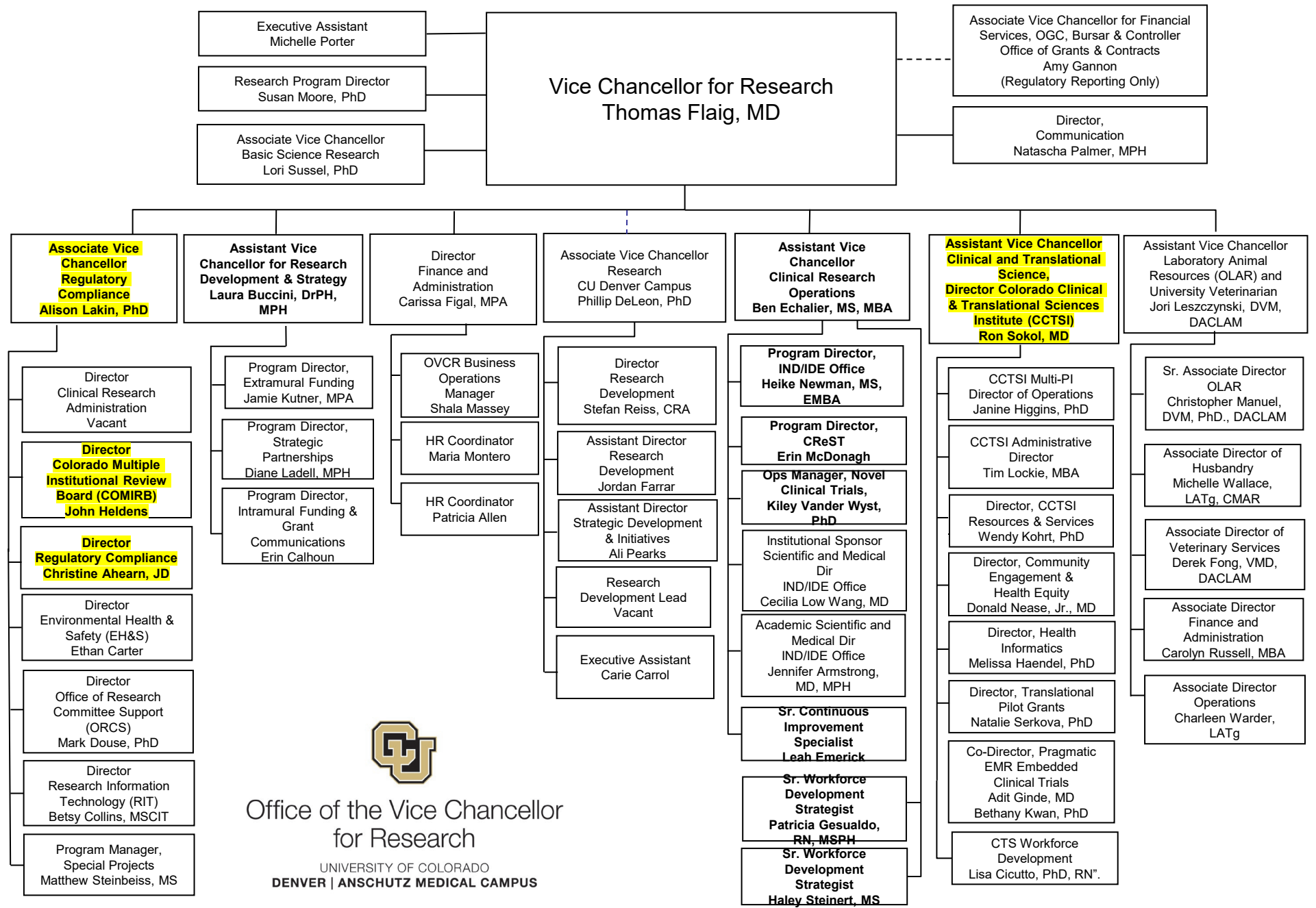
CCTSI Integration with the Office of the Vice Chancellor of Research

Tom Flaig, MD
Vice Chancellor for Research
University of Colorado
Denver | Anschutz Medical Campus

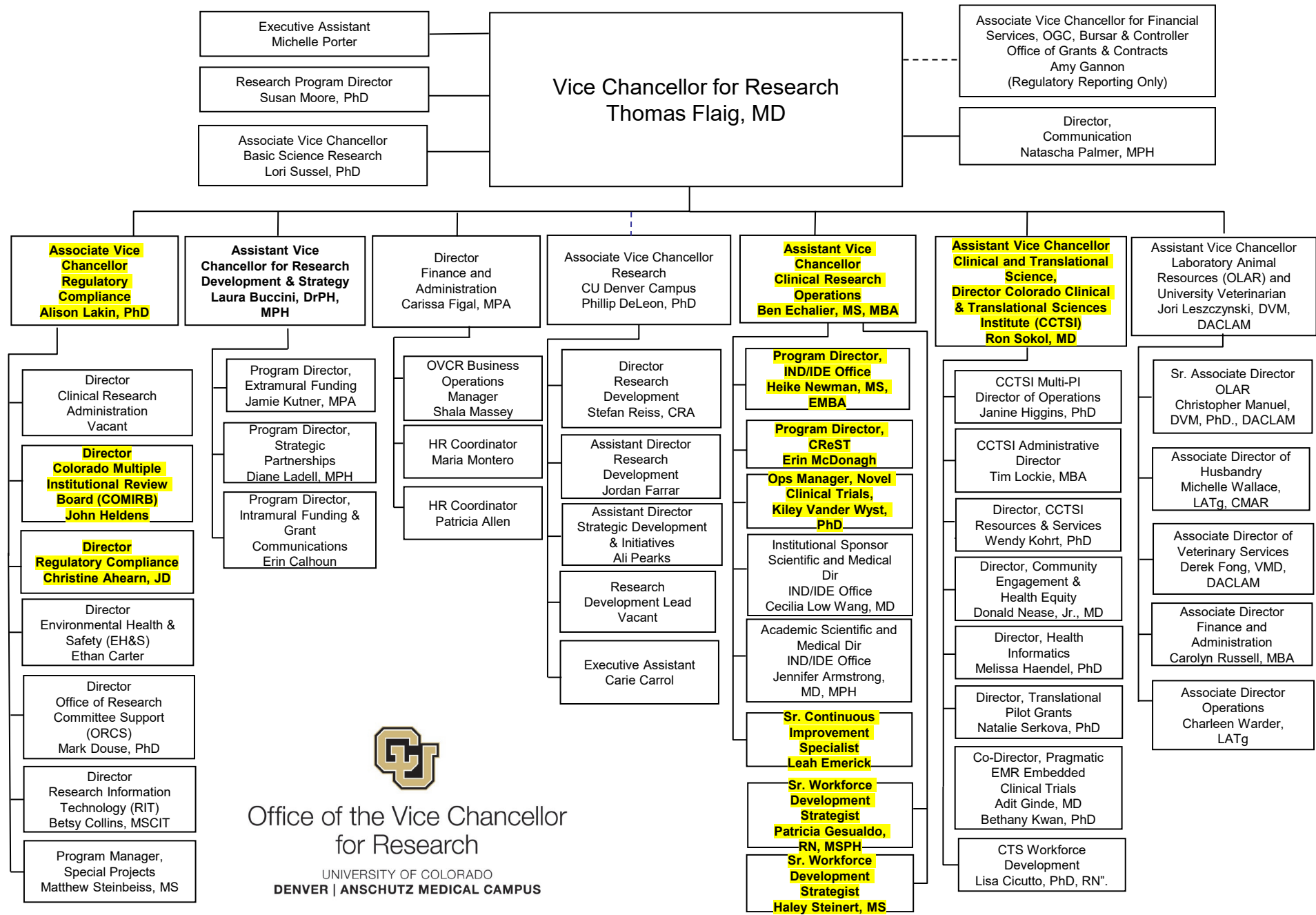




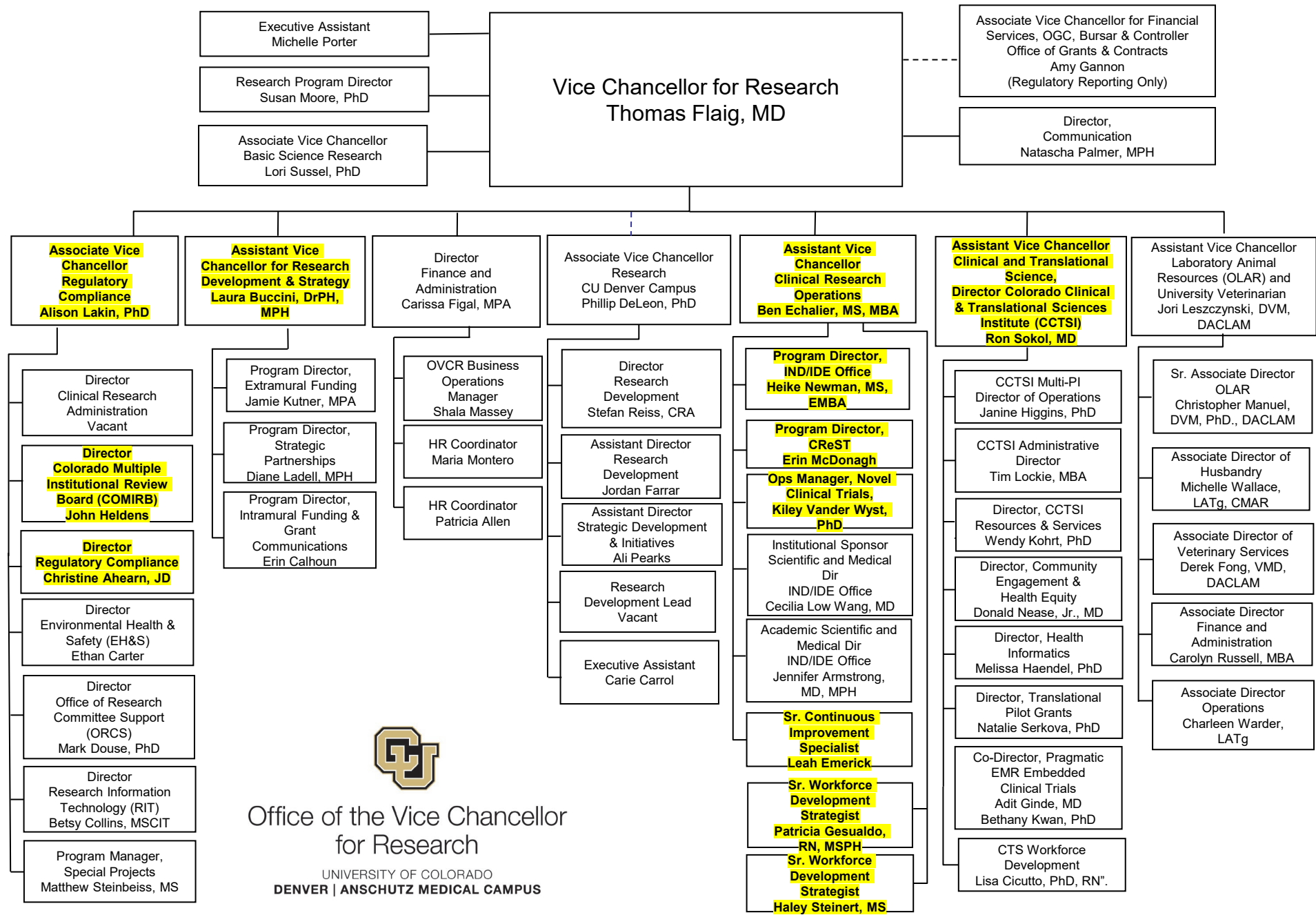
Office of the Vice Chancellor
for Research
UNIVERSITY OF COLORADO
DENVER | ANSCHUTZ MEDICAL CAMPUS



Office of the Vice Chancellor
for Research
UNIVERSITY OF COLORADO
DENVER | ANSCHUTZ MEDICAL CAMPUS



Office of the Vice Chancellor
for Research
UNIVERSITY OF COLORADO
DENVER | ANSCHUTZ MEDICAL CAMPUS



Office of the Vice Chancellor
for Research
UNIVERSITY OF COLORADO
DENVER | ANSCHUTZ MEDICAL CAMPUS



Central CU Anschutz IND/IDE Program

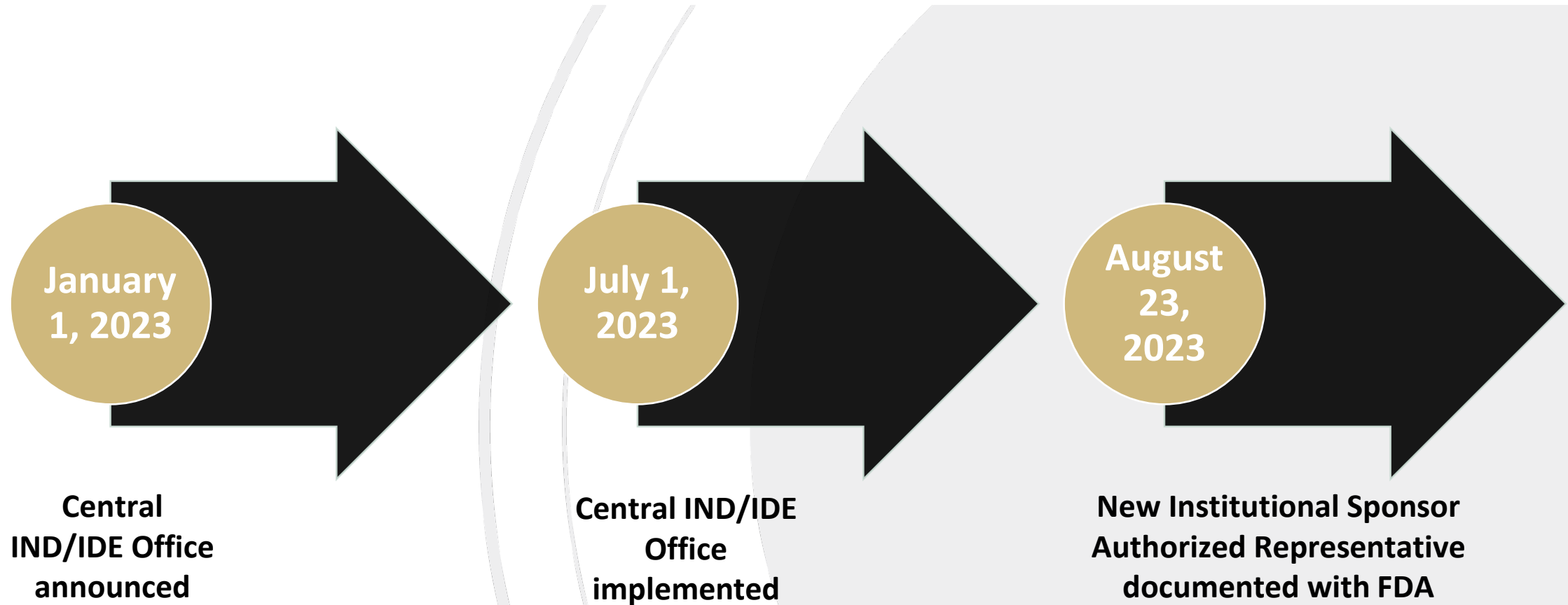


Clinical Research Operations and Services

OFFICE OF THE VICE CHANCELLOR FOR RESEARCH

UNIVERSITY OF COLORADO **ANSCHUTZ MEDICAL CAMPUS**


IMPLEMENTATION OF CENTRAL IND/IDE OFFICE




CENTRAL INTAKE FORM

To initiate a request for assistance with FDA communication:

- Complete the central intake form at <https://research.cuanschutz.edu/cros/ind-ide-office>
- Provide additional information and documentation as requested



Intake | Study Guidance |



Initiate Communication with the FDA

All locally held INDs and IDEs must use a single point of entry to initiate communication with the US Food and Drug Administration (FDA). Complete our intake form to triage your project to the IND/IDE Office or the Cancer Center, or to request a regulatory consultation.

[Triage Intake Form](#)





Clinical Research Recruitment Program



Clinical Research Operations and Services

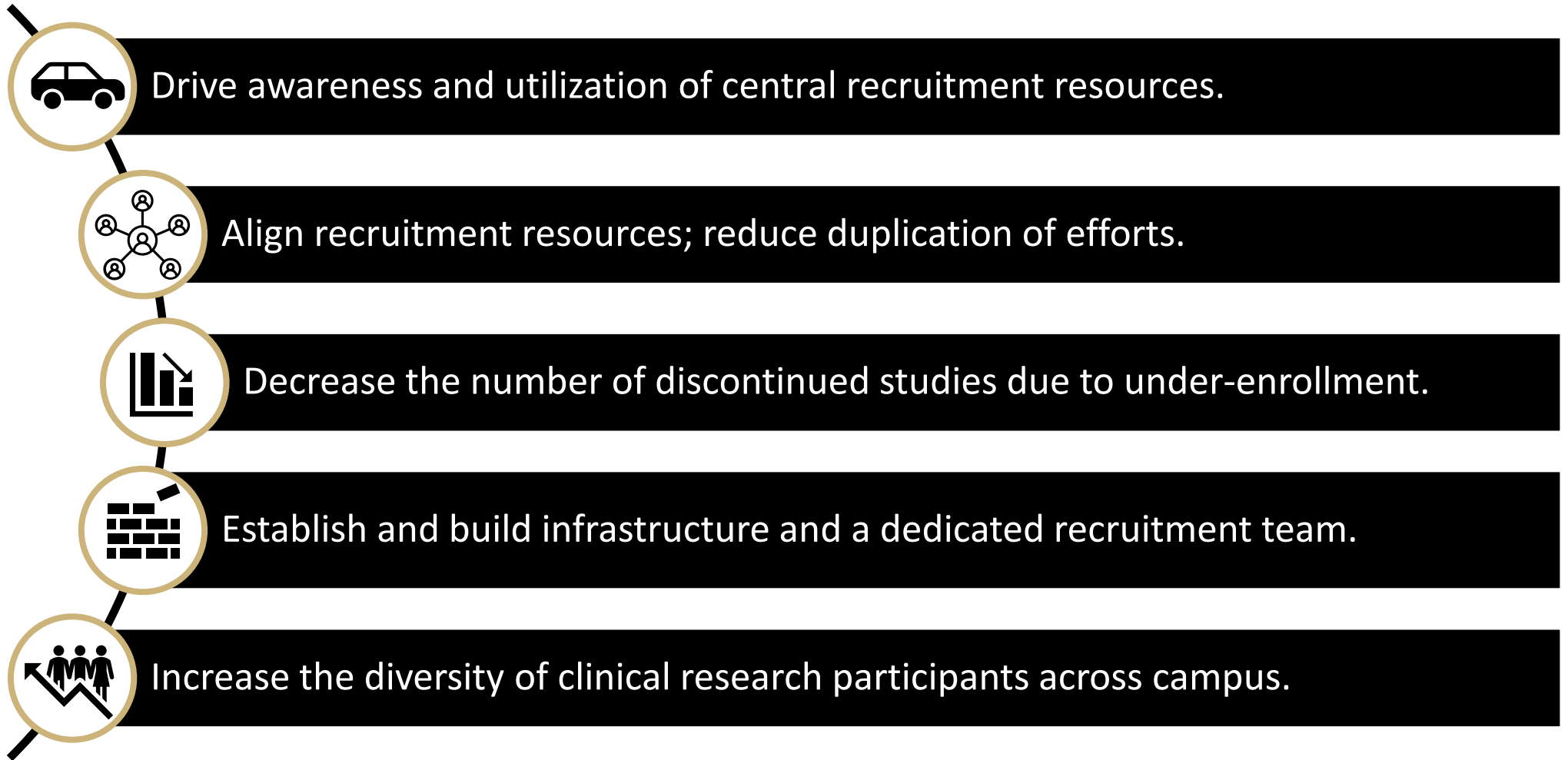
OFFICE OF THE VICE CHANCELLOR FOR RESEARCH

UNIVERSITY OF COLORADO ANSCHUTZ MEDICAL CAMPUS

Clinical Research Recruitment Program

Helping investigators raise awareness of their studies and engage people in trials.

Goals





Clinical Research Operations and Services

OFFICE OF THE VICE CHANCELLOR FOR RESEARCH

UNIVERSITY OF COLORADO **ANSCHUTZ MEDICAL CAMPUS**

Clinical Research Workforce Development



Colorado Clinical and Translational
Sciences Institute (CCTSI)

UNIVERSITY OF COLORADO DENVER | ANSCHUTZ MEDICAL CAMPUS

WFD 2023-2024 Overarching Goals

- **Onboarding**
 - Workgroup developing curriculum
- **3 Cs: Communication, Connection, Collaboration**
 - Teams
 - Round Table
 - Individual connection points (internal/external partners)
- **Diversity in the workforce**
 - Pathways program
 - Spring Institute

Year 2: Workforce Development Initiative Summary



Year 2 Start Date
Start Date 09/01/23

Year 2 WFD Goals

- Goal 1: Advocate for the CRP Community: Communication, Connection, and Collaboration (3cs)
- Goal 2: Expand Diversity Among RSPs
- Goal 3: Improve the Clinical Research Onboarding Experience
- Goal 4: Provide Clarity of the Promotion/Career Path

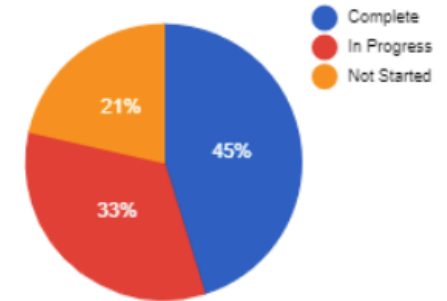
WFD: Task by Status

Primary	Start Date	Status	Goal Category
Total			Count 42
Status Complete			Count 19
Status In Progress			Count 14
Status Not Started			Count 9

WFD: Task by Status

Primary	Start Date	Status	Goal Category	Finis
Total				Count 42
Status Complete				Count 19
Meeting- HR data on Retention- Paul Joyce	10/09/23	Complete	Evaluate WFD goals	10/1
Development of an Onboarding Workgroup	09/01/23	Complete	Goal 3- Improve the RSP Onboarding Experience	10/1
NEO Discussion- Kaitlin Norris/Hannah Be	08/24/23	Complete	Goal 3- Improve the RSP Onboarding Experience	09/2
Meeting- with Wunmi Ogunwo- Dev of Onk	09/05/23	Complete	Goal 3- Improve the RSP Onboarding Experience	09/2
Meeting- Onboarding Curriculum- Meqan F	10/09/23	Complete	Goal 3- Improve the RSP Onboarding Experience	10/2

WFD: Task by Status



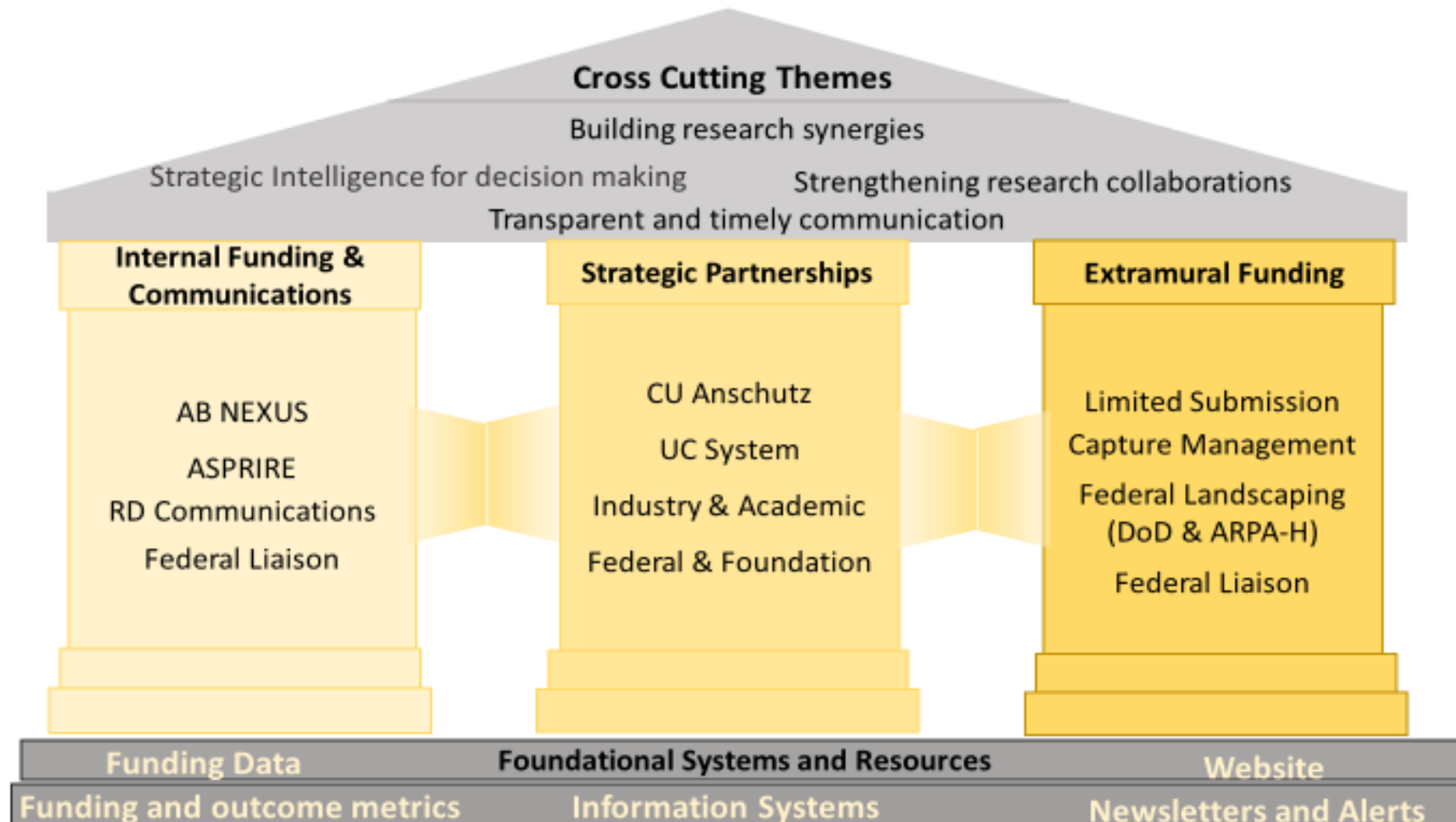
Research Development & Strategy



Colorado Clinical and Translational
Sciences Institute (CCTS)

UNIVERSITY OF COLORADO DENVER | ANSCHUTZ MEDICAL CAMPUS

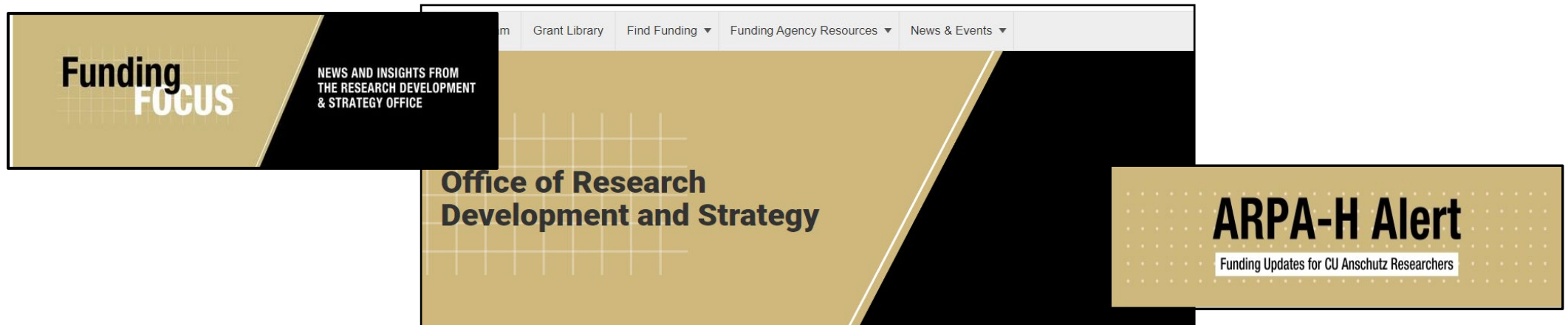
Research Development & Strategy Activities



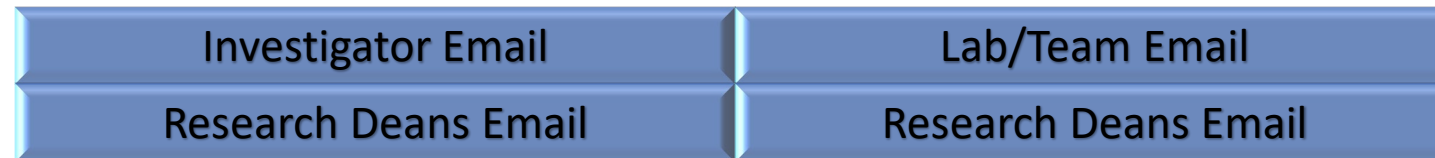
Funding Opportunities and Agency Initiatives

Processes for tracking, monitoring and communicating
Implementation of new funding database*

Broad Communication Strategies



Targeted Communication Strategies



Coordination with CCTSI and OVCR

- Strong alignment between CCTSI and OVCR
 - Coordinated effort to empower investigator to advance their research programs
- Leadership alignment
 - VCR is an active member of the CCTSI executive committee
 - Director of the CCTSI is an active member of the campus AVCR executive leadership meeting
 - Monthly meetings individual meetings
 - Regular leadership meetings with the CCTSI leadership/VCR
- Goal is to align related CTSA and institutional research support functions in a manner to facilitate translational research

