

12th CU-CSU Summit 2024

“Research Innovations in AI”

Ronald J. Sokol, MD
Director and MPI of CCTSI

cctsi.cuanschutz.edu



Colorado Clinical and Translational
Sciences Institute (CCTSI)

UNIVERSITY OF COLORADO DENVER | ANSCHUTZ MEDICAL CAMPUS



CTSA Program

- **Clinical and Translational Science Award (NIH)**
- **An NIH-funded national consortium of biomedical research institutions collaborating to transform how clinical and translational science is conducted nationwide**
- **Currently, ~60 funded Hubs, many of which include multiple universities and hospitals.**
- **Grants originate from NCATS at NIH**

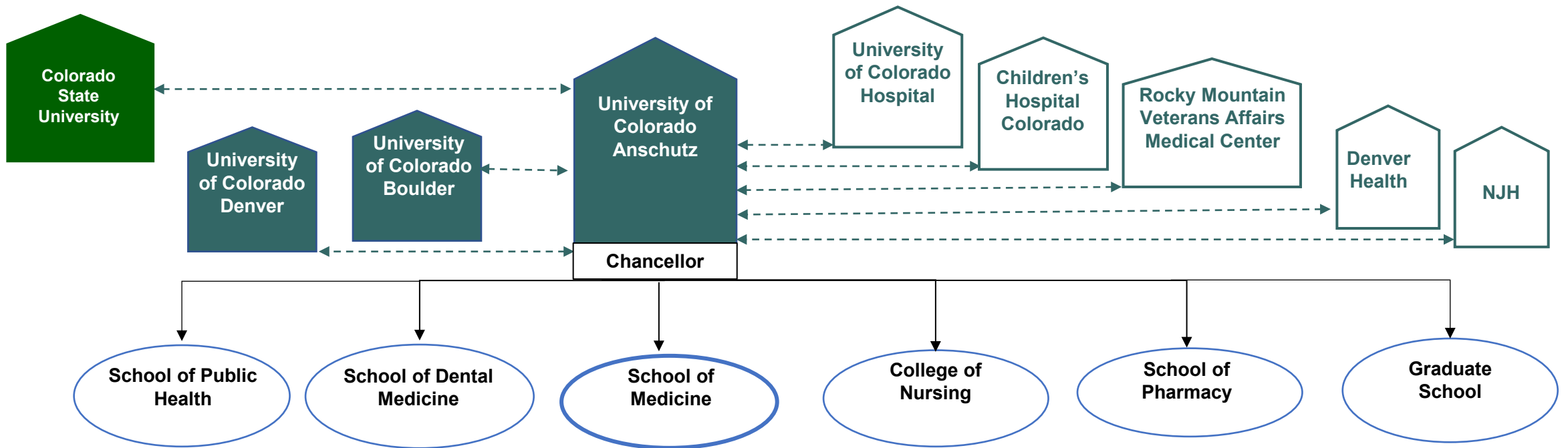


Colorado Clinical & Translational Sciences Institute

- **CCTSI is the Colorado CTSA Hub**
- **Created in 2008, refunded by NIH in 2013, 2018, 2023**
- **Substantial institutional support (funding)**
- **Supports all faculty, post-docs, trainees involved in clinical or translational research at 3 universities and 5 hospital partners**
- **“Disease – agnostic”**
- **Infrastructure, research facilities, community engagement, education and training, resources & services, pilot grant funding, biostatistics & informatics, and much more.....**



CCTSI Partners



CCTSI Vision

Accelerate and catalyze the translation of innovative science into improved, equitable health and patient care for all

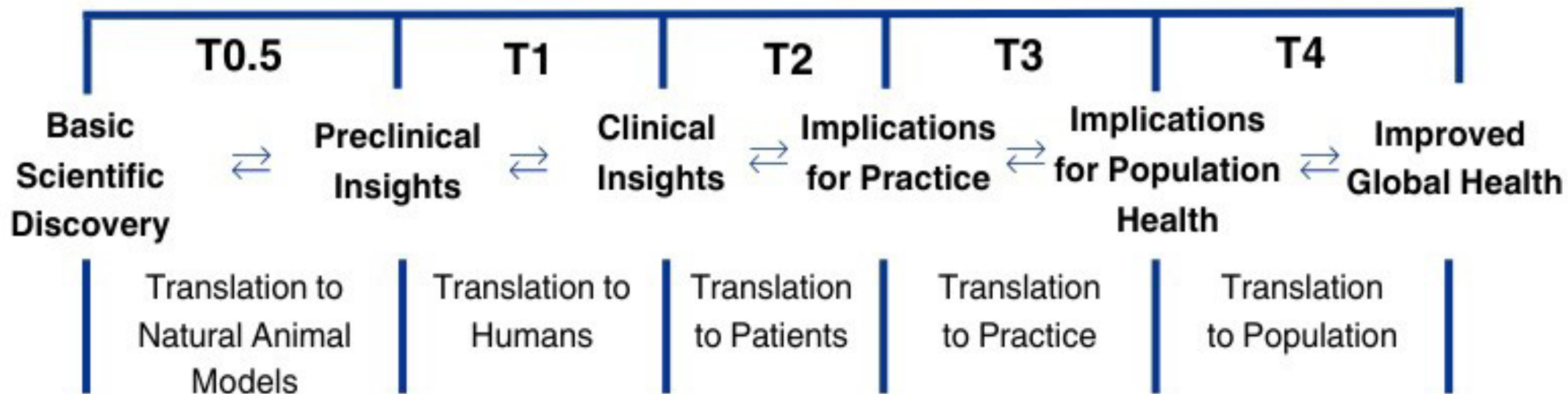


CCTSI 3.0 Mission



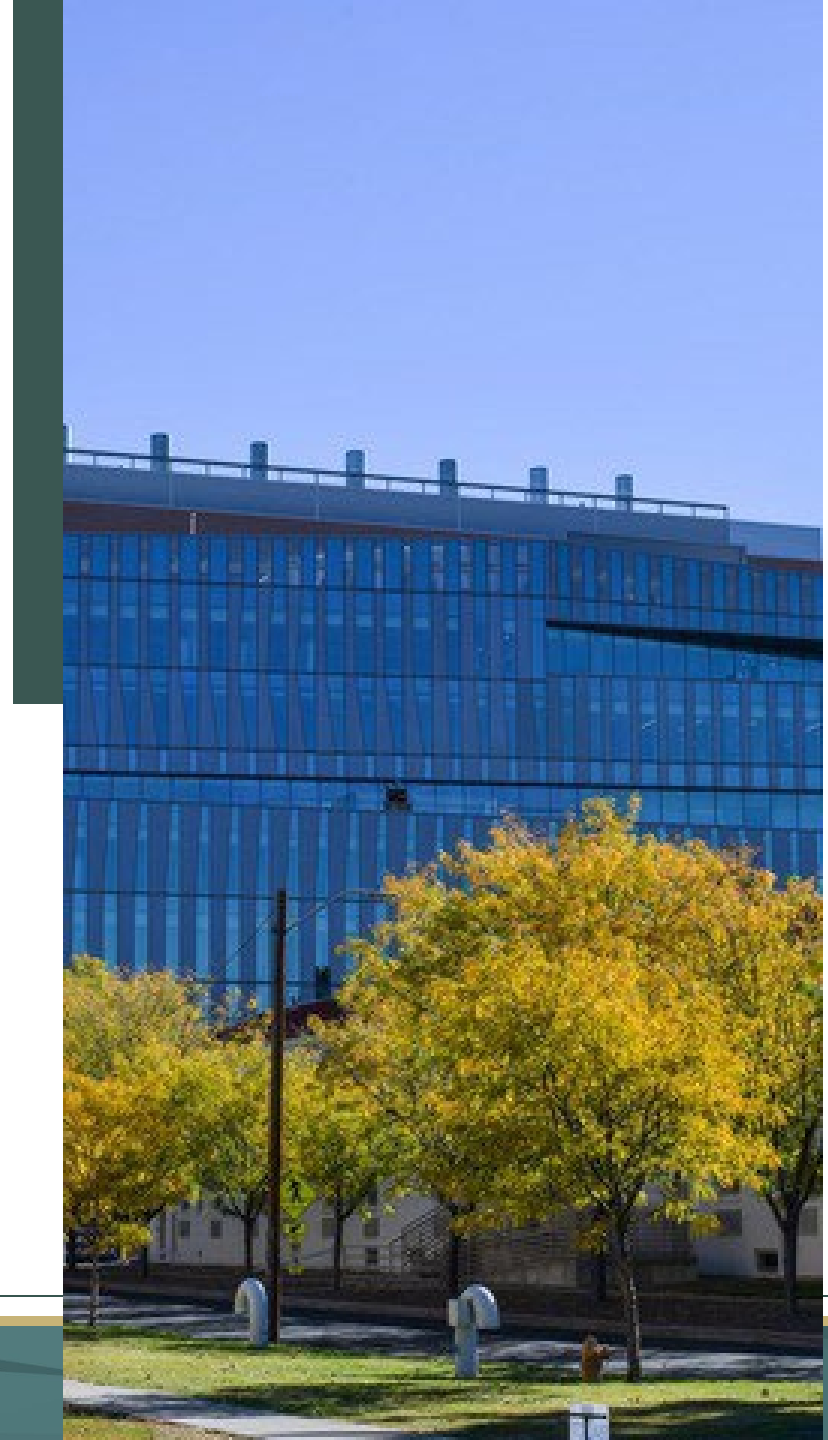
- **Catalyze** and enhance scientific discovery, innovation, dissemination and translation across the lifespan
- **Educate** and sustain a resilient, innovative and diverse translational science workforce
- Promote and ensure an efficient, safe, collaborative and integrated **research environment**
- **Engage stakeholders and communities** across the entire translational spectrum

Spectrum of Translational Research



CCTSI Programs & Resources

1. Education, Training and Career Development – [K12](#), [T32 x 2](#), [CLSC](#), etc.
2. Clinical Research Resources & Facilities – [CTRCs x4](#)
3. Community Engagement & Health Equity – [Immersion training](#), [Bootcamp Translation](#), [Pilot grants](#), [Iheard](#), [CEAL](#)
4. Dissemination & Implementation Research – [tools, education, and consults](#)
5. Team Science – [Teaming and Leading Workshop Series](#)
6. Biostatistics, Epidemiology and Research Design (BERD) – CIDA – [Tools, education, study and grant design, statistician assistance](#)
7. Translational Informatics – [REDCap](#), [N3C](#), [Colorado Profiles](#), etc.
8. Research Bioethics – [Consult service](#)
9. Regulatory Knowledge and Support – [OnCore](#), [Training](#), [DSMB](#), [IND assistance](#)
10. Pilot Grant Programs – [CO-Pilot](#), [CU-CSU](#), [CMH](#), [CEHE](#), [Translational Methods](#)
11. Trial Innovation Network – uses CTSA network to [facilitate multi-center trials](#)
12. Innovation and Entrepreneurship – [iCorp](#) customer discovery training, education, tools
13. Early Life Exposures Program (ELEP) – resources for [research in PN populations](#)



CCTSI Leadership and Diversity

Director & MPI: Ronald Sokol, MD

Director of Operations & MPI: Janine Higgins, PhD

DFA: Tim Lockie, MS, MBA

Associate Directors:

- Wendy Kohrt, PhD
- Alison Lakin, RN, LLB, LLM, PhD
- Donald Nease, MD, MPH & Montelle Tamez
- Natalie Serkova, PhD
- Lisa Cicutto, PhD, APN, RN
- Adit Ginde, MD, MPH
- Bethany Kwan, PhD & Adit Ginde, MD, MPH

DHH: Deborah Rinehart, PhD

CSU: Susan VandeWoude, DVM & Matt Hickey, PhD

CU Boulder: Chris Desouza, PhD

VAMC: Jane Reusch, MD

CCTSI Leadership:

50% Female

50% PhD or equivalent

Representation across Schools & Depts

SOM, CON, CSPH, Engineering

CCTSI Exec Committee:

52% Female 55% PhD or other

2 URM Community Representatives

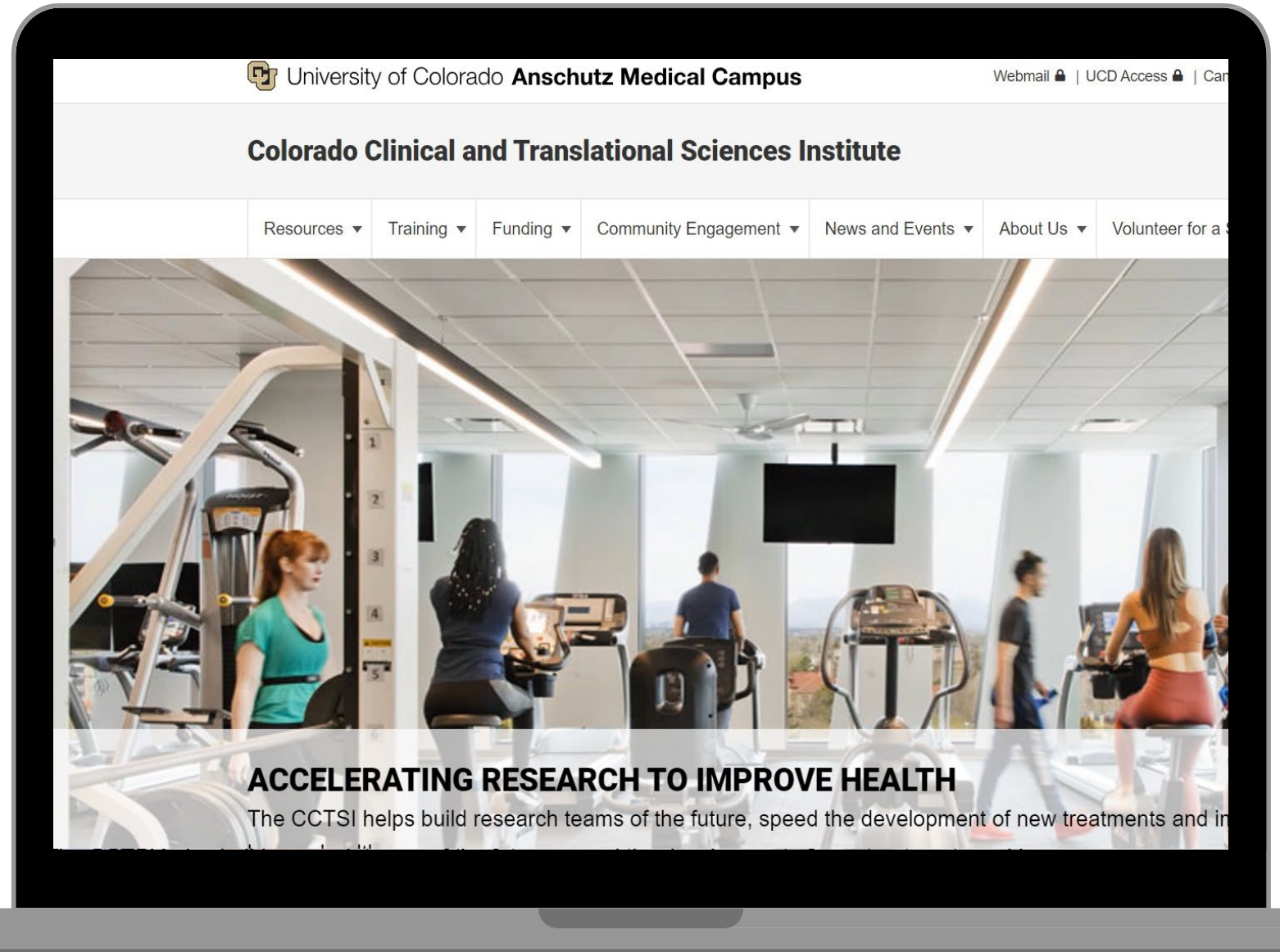
Representation across AMC Schools

and Depts, and all Partner Institutions



Website

cctsi.cuanschutz.edu



Colorado Clinical and Translational
Sciences Institute (CCTSI)

UNIVERSITY OF COLORADO DENVER | ANSCHUTZ MEDICAL CAMPUS

Pilot Grant Awards

Natalie Serkova, PhD

- **5 Pilot Grant programs** – CO-Pilot, CMH, Community Engagement, New Methods, CU-CSU Collaboration Award
- **~\$900,000 available**
- **\$25,000 for Community Engagement**
- **\$30,000 for Translational Methods**
- **\$40,000 for CO-Pilot and CMH mentored, junior, and early career diversity pilots**
- **\$60,000 for CU-SCU collaborative pilots**



Pre-K, Pre-R, and Pre-F Grant Review Programs

- Assist junior faculty and their mentors write successful career development and first R01 awards
- **Mock grant reviews:** 3 times a year (before NIH deadlines)
 - Applicants and mentors attend
 - Format: reviewers and then panel discusses, followed by Q&A
 - Full written reviews
- [Helpful materials](#) on website relevant to K applicants



Arianne Theiss
PhD



Paul Maclean
PhD



Maggie Wierman
MD



Regulatory Knowledge and Support (RKS)

Clinical Research Operations and Services

- IND/IDE Office
- Recruitment support program
- Workforce development support for clinical research professionals
- Education and training courses
- Decentralized/Virtual clinical trials support
- Service center support for clinical research operations



Benjamin Echalié, MS, MBA, CCRP

Clinical Research Administration

- OnCore support – CTMS, biobanking, eReg and EDC
- Human subject research portal – Scientific review (SARC), perinatal facilitation review committee and Investigation Product Review Committee (IPRC)
- CT.gov support
- Auditing and quality improvement

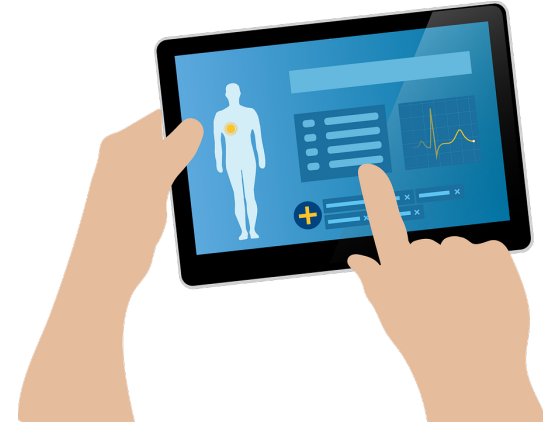


Alison Lakin, RN JD, PhD

Pragmatic EHR Embedded Trials (PEET)

Adit Ginde, MD, Bethany Kwan, PhD, Janine Higgins, PhD

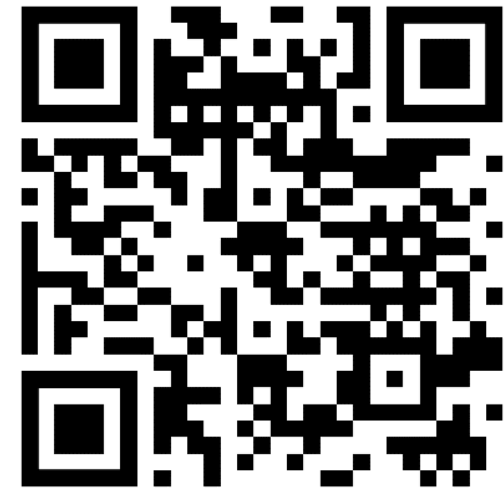
- ***New Program!***
- Build the Program infrastructure at UCH/UCHealth (initially)
- Engage stakeholders in co-design of materials and for dissemination across the CTSA consortium
- Conduct PEET trials – for up to three years each, 2 ongoing per year
 - Initial demonstration trial – metformin in men with prostate cancer
- Watch for RFAs for submission of new trial proposals in 2024-5



Contact Us

 **303 - 724 - 1222**

 **cctsi.cuanschultz.edu**





12th Annual CU-CSU CCTSI Summit

“Research Innovations in Artificial Intelligence”

Goals:

1. Highlight ongoing research, resources and progress in Colorado
 2. Promote new collaborations, scientific exchange, mentor-mentee relationships, networking
- **In Person Format** : 5 sessions, Lightning Talks, a Poster Session, Generative AI demonstration, Breakfast and Lunch, Networking Time, Finish before 3:00 pm



Thank You

CU-CSU Summit Planning Committee

- Jayashree Kalpathy-Cramer, PhD, CU Anschutz
- Matt DeCamp, MD, PhD – CU Anschutz
- Chris DeSouza, PhD – CU Boulder
- Matthew Hickey, PhD, Colorado State University
- Janine Higgins, PhD, CU Anschutz
- Ronald J. Sokol, MD, CU Anschutz
- Wendy S. Meyer, MA, CU Anschutz

