



Colorado Clinical and Translational
Sciences Institute (CCTSI)

UNIVERSITY OF COLORADO **DENVER** | **ANSCHUTZ MEDICAL CAMPUS**

Colorado Mentoring Training (CO-Mentor) Program

Directory | 2021-2022

CONTENTS

CCTSI Program	1
CCTSI Leadership	2
CO-Mentor Program	3
CO-Mentor Faculty & Staff	4
CO-Mentor Mentees	6
CO-Mentor Mentors	15

The **CCTSI** Program

The Colorado Clinical and Translational Sciences Institute (CCTSI), created in 2008, includes the University of Colorado Anschutz Medical Campus, University of Colorado Denver, University of Colorado Boulder, Colorado State University, six major hospitals, and health care organizations and local communities. The CCTSI will:

- Expand this statewide academic home for clinical and translational research.
- Implement new clinical research management strategies to improve quality, safety, efficiency, cost-effectiveness, and innovative team science as well as introduce new software systems and workflows.
- Centralize the delivery of resources, services, and technologies.
- Incorporate key concepts of community engagement into the full spectrum of translational research.
- Increase the translational research workforce capacity through a broad curriculum of education, training, and career development opportunities.

A rigorous tracking, assessment, and evaluation program with a formal quality and process improvement component will ensure the best use of resources while protecting the safety of research study participants. These programs will be centralized at the University of Colorado Anschutz Medical Campus, which is adjacent to participating schools, research laboratories, three hospitals, and a biomedical corporate park.



Ronald J. Sokol, MD, FAASLD

Arnold Silverman MD Endowed Chair in Digestive Health

Professor and Vice Chair of Pediatrics

Director, Colorado Clinical and Translational Sciences Institute

Assistant Vice Chancellor for Clinical and Translational Science, Univ. of Colorado Denver

Chief, Section of Pediatric Gastroenterology, Hepatology and Nutrition and the Digestive Health Institute

University of Colorado School of Medicine

Children's Hospital Colorado

ronald.sokol@childrenscolorado.org

720-777-6669

Colorado Mentoring Training (CO-Mentor) Program

The **Colorado Mentoring Training (CO-Mentor) Program** is a series of integrated workshops that uses evidence-based strategies to teach mentor/mentee pairs the skills they need to get the most out of their mentoring relationships.

Most training occurs in mentor/mentee pairs; however, some activities will be for mentors or mentees separately. The goal is to help participants build practical, overarching skills for mentoring success.

The CO-Mentor program addresses the following Topics:

- Career mapping and creating a career development plan
- Setting goals
- CV building
- Understanding your preferred communication style with the Communication Preference Questionnaire™ (CPQ)
- Establishing the mentor/mentee relationship
- Writing effective mentor letters
- Giving and receiving effective feedback
- Building an effective mentoring team
- Identifying personal strengths and values
- Professional networking
- Promoting academic persistence
- Understanding and managing the financial aspects of an academic career

CO-Mentor Faculty and Staff



Gregory Austin, MD MPH

*Professor of Medicine
Vice Chair for Regional Clinical Affairs,
Department of Medicine
Director, CCTSI CO-Mentor Program
Director, Junior Faculty Development,
Department of Medicine
Division of Gastroenterology and Hepatology
University of Colorado Anschutz Medical Campus*
gregory.austin@cuanschutz.edu



Anne M. Libby, PhD

*Professor and Vice Chair for Academic Affairs
University of Colorado Anschutz Medical Campus,
Department of Emergency Medicine
Director, CCTSI Clinical Faculty Scholars Program
Course Director, <https://www.coursera.org/learn/researcher-management-leadership-training>
Co-Director, CCTSI Colorado Mentoring Training Program (CO-Mentor)
Co-Director, Doris Duke Charitable Foundation
Fund to Retain Clinical Scientists Program
University of Colorado Anschutz Medical Campus*
anne.libby@cuanschutz.edu



Galit Mankin, MSW

*Program Administrator, Clinical Science Graduate Program
Programs Manager, Education Training and Career Development (ETCD), CCTSI
University of Colorado Anschutz Medical Campus*
galit.mankin@cuanschutz.edu

CO-Mentor Mentees

of 2021-2022

CO-Mentor Mentees



Ellie Bau, MS

Biostatistician

Rocky Mountain Poison & Drug Safety (RMPDS)

A Division of Denver Health

ellie.bau@rmpds.org



C. Robert Bennett, PhD

Post-Doctoral Fellow

Department of Medicine – General Internal Medicine

University of Colorado Anschutz Medical Campus

c.bennett@cuanschutz.edu



Stephan Bodkin, MD, PhD, ATC

Post-Doctoral Fellow

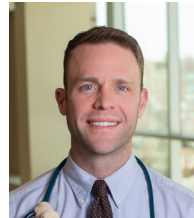
Department of Physical Medicine

and Rehabilitation – Physical Therapy

University of Colorado Anschutz Medical Campus

Rocky Mountain Regional VA Medical Center

stephan.bodkin@cuanschutz.edu



James Brock, DO

Assistant Professor

Department of Pediatrics – Pediatric Pulmonology

National Jewish Health

brockj@njhealth.org

CO-Mentor Mentees



Katie Butera, DPT, PhD

Post-Doctoral Fellow

Department of Physical Medicine

and Rehabilitation – Physical Therapy

University of Colorado Anschutz Medical Campus

katie.butera@cuanschutz.edu



Stephanie Chassen, MD

Assistant Professor

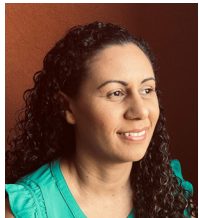
Department of Pediatrics - Neonatology

University of Colorado Anschutz Medical Campus

Children's Hospital Colorado

University of Colorado Hospital

stephanie.chassen@cuanschutz.edu



Sylvania Da Silva Teixeira, PhD

Instructor

Department of Pediatrics – Nutrition

University of Colorado Anschutz Medical Campus

silvania.dasilvateixeira@cuanschutz.edu



Allison Dempsey, PhD

Associate Professor

Department of Psychiatry – Adult Psychiatry

University of Colorado Anschutz Medical Campus

Children's Hospital Colorado

University of Colorado Hospital

allison.dempsey@cuanschutz.edu

CO-Mentor Mentees



Lyndsey DuBose, PhD

Post-Doctoral Fellow

Department of Medicine – Geriatric Medicine

University of Colorado Anschutz Medical Campus

lyndsey.dubose@cuanschutz.edu



Nidhi Dwivedi, PhD

Instructor

Department of Medicine – Renal Diseases

and Hypertension

University of Colorado Anschutz Medical Campus

nidhi.dwivedi@cuanschutz.edu



Erin Englund, PhD

Assistant Professor – Research

Department of Radiology

University of Colorado Anschutz Medical Campus

Children's Hospital Colorado

erin.englund@cuanschutz.edu



Mikita Fuchita, MD

Senior Instructor

Department of Anesthesiology

University of Colorado Anschutz Medical Campus

University of Colorado Hospital

mikita.fuchita@cuanschutz.edu

CO-Mentor Mentees



Caroline Hall, MD, PhD

Assistant Professor

Department of Pediatrics - Gastroenterology,

Hepatology and Nutrition

University of Colorado Anschutz Medical Campus

Children's Hospital Colorado

caroline.hall@childrenscolorado.org



Emily Hill, PhD

Post-Doctoral Fellow

Department of Pediatrics - Nutrition

University of Colorado Anschutz Medical Campus

emily.b.hill@cuanschutz.edu



Swetha Iruku, MD, MPH

Faculty Fellow

Department of Family Medicine

Denver Health

swetha.iruku@cuanschutz.edu



Courtney Legge, PsyD

Senior Instructor

Department of Family Medicine – Integrated

Behavioral Health

University of Colorado Anschutz Medical Campus

courtney.legge@cuanschutz.edu

CO-Mentor Mentees



Laura Leonard, MD

Surgical Resident/Research Fellow

Department of Surgery

University of Colorado Anschutz Medical Campus

laura.d.leonard@cuanschutz.edu



Zachary Macchi, MD

Instructor

Department of Medicine –

General Internal Medicine

University of Colorado Anschutz Medical Campus

zachary.macchi@cuanschutz.edu



Demetria McNeal, PhD

Assistant Professor

Department of Medicine – General Internal Medicine

University of Colorado Anschutz Medical Campus

demetria.mcneal@cuanschutz.edu



Carmen Ortega-Santos, PhD

Post-Doctoral Fellow

Department of Medicine – Endocrinology,

Metabolism & Diabetes

University of Colorado Anschutz Medical Campus

carmen.ortega-santos@cuanschutz.edu

CO-Mentor Mentees



Meghan Pauley, DO

Faculty Fellow

*Department of Pediatrics - Endocrinology
and Diabetes*

Children's Hospital Colorado

meghan.pauley@childrenscolorado.org



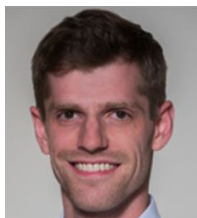
Ana Pinto, PhD

Post-Doctoral Fellow

*Department of Medicine – Endocrinology,
Metabolism & Diabetes*

University of Colorado Anschutz Medical Campus

ana.pinto@cuanschutz.edu



Alexander Rankin, MD

Clinical Fellow

*Center for Cancer and Blood Disorders
Department of Pediatrics – Hematology, Oncology,
and Bone Marrow Transplantation*

University of Colorado Anschutz Medical Campus

Children's Hospital Colorado

alexander.rankin@childrenscolorado.org



Matthew Riscinti, MD

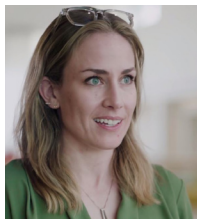
Assistant Professor

*Department of Emergency Medicine –
Emergency Ultrasound*

Denver Health

matthew.riscinti@dhha.org

CO-Mentor Mentees



Claire Tucker, MS, MPH, DVM

*Post-Doctoral Fellow
Department of Clinical Sciences –
Critical Care Services
College of Veterinary Medicine
and Biomedical Science
Colorado State University
claire.tucker@colostate.edu*



Anna Valentine, MD

*Faculty Fellow
Department of Pediatrics –
Pediatric Endocrinology
University of Colorado Anschutz Medical Campus
Children's Hospital Colorado
anna.valentine@childrenscolorado.org*



Stephanie Waldrop, MD, MPH

*Post-Doctoral Fellow
Department of Pediatrics - Nutrition
University of Colorado Anschutz Medical Campus
Children's Hospital Colorado
stephanie.waldrop@cuanschutz.edu*



Leah Webb, MD

*Assistant Professor
Department of Anesthesiology –
Pediatric Anesthesiology
University of Colorado Anschutz Medical Campus
University of Colorado Hospital
Children's Hospital Colorado
leah.webb@childrenscolorado.org*

CO-Mentor Mentees



Sara Wettergreen, PharmD

Assistant Professor

Department of Clinical Pharmacy

Skaggs School of Pharmacy

and Pharmaceutical Sciences

University of Colorado Anschutz Medical Campus

University of Colorado Hospital

sara.wettergreen@cuanschutz.edu

CO-Mentor Mentors

of 2021-2022

CO-Mentor Mentors



Alex J. Barker, PhD

Associate Professor

Director of Advanced Imaging Program

Department of Pediatric Radiology

University of Colorado Anschutz Medical Campus

alexander.barker@cuanschutz.edu



Audrey Bergouignan, PhD

Assistant Professor

Director of Research at the French National

Center for Scientific Research (CNRS)

*Department of Medicine – Endocrinology,
Metabolism & Diabetes*

University of Colorado Anschutz Medical Campus

audrey.bergouignan@cuanschutz.edu



Joshua C. Black, PhD

Senior Research Scientist

Rocky Mountain Poison & Drug Safety (RMPDS)

A Division of Denver Health

joshua.black@rmpds.org



Sarah J. Borengasser, MS, PhD

Assistant Professor

Associate Director, Nutrition T32 Training Grant

Department of Pediatrics – Nutrition

University of Colorado Anschutz Medical Campus

sarah.borengasser@cuanschutz.edu

CO-Mentor Mentors



Heather Coats, PhD, APRN-BC

*Assistant Professor
Director, Palliative Care Inquiry
Director of Research, Hospice and
Palliative Care Nurses Association
College of Nursing
University of Colorado Anschutz Medical Campus
heather.coats@cuanschutz.edu*



Edwin F. de Zoeten, MD, PhD

*Hoover Family Endowed Chair for
Digestive Health and Nutrition
Director, Pediatric Inflammatory Bowel Disease Center
Children's Hospital Colorado
Associate Professor
Department of Pediatrics -
Gastroenterology and Hepatology
University of Colorado Anschutz Medical Campus
edwin.dezoeten@childrenscolorado.org*



Ana Fernandez-Bustamante, MD, PhD

*Associate Professor
Department of Anesthesiology
University of Colorado Anschutz Medical Campus
ana.fernandez-bustamante@cuanschutz.edu*



Kelly Hall, DVM, MS, DACVECC

*Associate Professor, Critical Care Services
Executive Director, VetCOT
Department of Clinical Sciences
Colorado State University
khall.wilke@colostate.edu*

CO-Mentor Mentors



Michael Harris-Love, DSC, MPT, PT, FGSA
Professor
Department of Physical Medicine & Rehabilitation -
Physical Therapy Program
University of Colorado Anschutz Medical Campus
michael.harris-love@cuanschutz.edu



Katharina Hopp, PhD
Assistant Professor
Department of Medicine - Renal Diseases
and Hypertension
University of Colorado Anschutz Medical Campus
katharina.hopp@cuanschutz.edu



John Kendall, MD
Professor
Department of Emergency Medicine
University of Colorado Anschutz Medical Campus
john.kendall@dhha.org



Rodger Kessler, PhD, ABPP
Associate Clinical Professor
Department of Family Medicine
University of Colorado Anschutz Medical Campus
Senior Scientist, Dissemination and Implementation
National Research Network,
American Academy of Family Physicians
rodger.kessler@cuanschutz.edu

CO-Mentor Mentors



M. Eric Kohler, MD, PhD

Assistant Professor

*Department of Pediatrics – Bone Marrow Transplant
and Cellular Therapies*

University of Colorado Anschutz Medical Campus

mark.kohler@cuanschutz.edu



CT Lin, MD, FACP, FAMIA

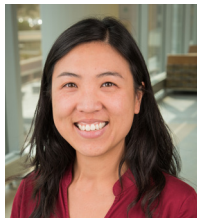
Professor

Department of Medicine – Internal Medicine

University of Colorado Anschutz Medical Campus

Chief Medical Information Officer, UCHHealth

ct.lin@cuanschutz.edu



Hillary Lum, MD, PhD

Associate Professor

Department of Medicine - Geriatric Medicine

University of Colorado Anschutz Medical Campus

Rocky Mountain Regional VA Medical Center

hillary.lum@cuanschutz.edu



Natalie Nokoff, MD, MSCS

Assistant Professor

Department of Pediatrics - Endocrinology

University of Colorado Anschutz Medical Campus

natalie.nokoff@childrenscolorado.org

CO-Mentor Mentors



J. Tod Olin, MD, MSCS

*Respiratory Consultant, United States Olympic and Paralympic Committee and USA Swimming
Director, National Jewish Health Exercise and Performance Breathing Center
Associate Professor
Department of Pediatrics - Pediatric Pulmonology
Department of Medicine - Pulmonary, Critical Care & Sleep Medicine
National Jewish Health
olint@njhealth.org*



Regina Richards, PhD

*Vice Chancellor of Diversity, Equity and Inclusion
Office of Inclusion and Outreach
Assistant Professor
Department of Family Medicine
University of Colorado Anschutz Medical Campus
regina.richards@cuanschutz.edu*



Theresa Powell, PhD

*Professor
Department of Pediatrics - Neonatology
University of Colorado Anschutz Medical Campus
theresa.powell@cuanschutz.edu*



Darleen Sandoval, PhD

*Professor
Department of Pediatrics – Nutrition
University of Colorado Anschutz Medical Campus
darleen.sandoval@cuanschutz.edu*

CO-Mentor Mentors



Kimber Simmons, MD, MPH/MSPH

Assistant Professor

*Department of Pediatrics – Barbara Davis Center
University of Colorado Anschutz Medical Campus
kimber.simmons@cuanschutz.edu*



Andrew C. Smith, PT, DPT, PhD

Assistant Professor

*CU Physical Therapy Program
Department of Physical Medicine and Rehabilitation
University of Colorado Anschutz Medical Campus
andrew.c2.smith@cuanschutz.edu*



Thomas J. Staff, MD, MPH

*Family Physician, Lowry Family Health Center,
Denver Health & Hospital Authority
Associate Program Director,
University of Colorado Family Medicine Residency,
Denver Health Track
Associate Professor of Clinical Practice
Department of Family Medicine
University of Colorado Anschutz Medical Campus
thomas.staff@dhha.org*



Jennifer Stevens-Lapsley, PT, PhD, FAPTA

*Professor
Director, Rehabilitation Science PhD Program
PT Section Director, Research and Development
Physical Therapy Program
University of Colorado Anschutz Medical Campus
Associate Director for Research,
Geriatric Research, Education, and Clinical Center
VA Eastern Colorado Health Care System
jennifer.stevens-lapsley@cuanschutz.edu*

CO-Mentor Mentors



Kim Strupp, MD

*Associate Professor
Department of Anesthesiology –
Pediatric Anesthesiology
University of Colorado Anschutz Medical Campus
Clinic Director
Children's Hospital Colorado
kim.strupp@childrenscolorado.org*



Sarah Tevis, MD

*Assistant Professor
Department of Surgery – Surgical Oncology
University of Colorado Anschutz Medical Campus
sarah.tevis@cuanschutz.edu*



**Jennifer M. Trujillo, PharmD, BCPS,
FCCP, CDCES, BC-ADM**

*Professor
Department of Clinical Pharmacy
Skaggs School of Pharmacy and Pharmaceutical
Sciences
University of Colorado Anschutz Medical Campus
jennifer.trujillo@cuanschutz.edu*



Sarah Wherry, PhD

*Research Associate
Department of Medicine - Geriatric Medicine
University of Colorado Anschutz Medical Campus
Director of Exercise Program Quality and Delivery,
VA Denver Gerofit
Health Science Specialist, RMR VAMC
Research Service
sarah.wherry@cuanschutz.edu*

This image shows a blank sheet of white paper with horizontal ruling lines. The lines are evenly spaced and run across the width of the page. There are no margins, text, or other markings on the paper.



An Institute at the University of Colorado Denver | cuanschutz.edu/cctsi | 720-848-7100

The University of Colorado is committed to diversity and equality in education and employment.

CCTSI is supported in part by Colorado CTSA Grant UL1 TR002535 from NCATS / NIH.