



Colorado Clinical and Translational
Sciences Institute (CCTSI)

UNIVERSITY OF COLORADO DENVER | ANSCHUTZ MEDICAL CAMPUS

Colorado Mentoring Training (CO-Mentor) Program Directory | 2023-2024

CONTENTS

CCTSI Program	1
CCTSI Leadership	2
CO-Mentor Program	3
CO-Mentor Faculty & Staff	4
CO-Mentor Mentees	5
CO-Mentor Mentors	12

The **CCTSI** Program

The Colorado Clinical and Translational Sciences Institute (CCTSI), created in 2008, includes the University of Colorado Anschutz Medical Campus, University of Colorado Denver, University of Colorado Boulder, Colorado State University, six major hospitals, and health care organizations and local communities. The CCTSI will:

- Expand this statewide academic home for clinical and translational research.
- Implement new clinical research management strategies to improve quality, safety, efficiency, cost-effectiveness, and innovative team science as well as introduce new software systems and workflows
- Centralize the delivery of resources, services, and technologies.
- Incorporate key concepts of community engagement into the full spectrum of translational research.
- Increase the translational research workforce capacity through a broad curriculum of education, training, and career development opportunities.

A rigorous tracking, assessment, and evaluation program with a formal quality and process improvement component will ensure the best use of resources while protecting the safety of research study participants. These programs will be centralized at the University of Colorado Anschutz Medical Campus, which is adjacent to participating schools, research laboratories, three hospitals, and a biomedical corporate park.



Ronald J. Sokol, MD, FAASLD

Chief Scientific Officer, Child Health and

Senior Vice President, Children's Hospital Colorado

CU Distinguished Professor of Pediatrics, Pediatric GI, Hepatology and Nutrition

Bruce and Bev Wagner Endowed Chair in Child Health Research

Associate Dean for Child Health Research, CU School of Medicine

Director, Colorado Clinical and Translational Sciences Institute

Assistant Vice Chancellor for Clinical and Translational Science, Univ. of Colorado Denver

University of Colorado School of Medicine

Children's Hospital Colorado

ronald.sokol@childrenscolorado.org

720-777-6669

Colorado Mentoring Training (CO-Mentor) Program

The **Colorado Mentoring Training (CO-Mentor) Program** is a series of integrated workshops that uses evidence-based strategies to teach mentor/mentee pairs the skills they need to get the most out of their mentoring relationships.

Most training occurs in mentor/mentee pairs; however, some activities will be for mentors or mentees separately. The goal is to help participants build practical, overarching skills for mentoring success. The CO-Mentor program addresses the following Topics:

The CO-Mentor program addresses the following Topics:

- Career mapping and creating a career development plan
- Setting goals
- CV building
- Understanding your preferred communication style with the Communication Preference Questionnaire™ (CPQ)
- Establishing the mentor/mentee relationship
- Writing effective mentor letters
- Giving and receiving effective feedback
- Building an effective mentoring team
- Identifying personal strengths and values
- Professional networking
- Promoting academic persistence
- Understanding and managing the financial aspects of an academic career

CO-Mentor Faculty and Staff



Gregory Austin, MD, MPH

*Vice Chair for Community Practice,
Department of Medicine
Director, CCTSI CO-Mentor Program
Professor of Medicine,
Division of Gastroenterology and Hepatology
University of Colorado Anschutz Medical Campus*
gregory.austin@cuanschutz.edu



Anne M. Libby, PhD

*Professor and Vice Chair for Academic Affairs
University of Colorado Anschutz Medical Campus,
Department of Emergency Medicine
Director, CCTSI Clinical Faculty Scholars Program
Course Director, <https://www.coursera.org/learn/researcher-management-leadership-training>
Co-Director, CCTSI Colorado Mentoring
Training Program (CO-Mentor)
Co-Director, Doris Duke Charitable Foundation
Fund to Retain Clinical Scientists Program
University of Colorado Anschutz Medical Campus*
anne.libby@cuanschutz.edu



Galit Mankin, MSW

*Program Administrator,
Clinical Science Graduate Program
Programs Manager, Translational Workforce
Development (TWD), CCTSI
University of Colorado Anschutz Medical Campus*
galit.mankin@cuanschutz.edu

CO-Mentor Mentees

of 2023-2024

CO-Mentor Mentees



Karen Aarestad, PhD
Assistant Vice Chancellor, Advancement
University of Colorado Anschutz Medical Campus
karen.aarestad@cuanschutz.edu



Aubrey Armento, MD
Assistant Professor
Department of Orthopedics
University of Colorado Anschutz Medical Campus
Pediatric Sports Medicine Physician
Sports Medicine Center
Children's Hospital Colorado
aubrey.armento@childrenscolorado.org



Matthew Bolt, MS
Research Instructor
Colorado School of Public Health
Department of Biostatistics and Informatics
Center for Innovative Design and Analysis
University of Colorado Anschutz Medical Campus
matthew.bolt@cuanschutz.edu



Heather Buxton, MD
Clinical Instructor
University of Colorado
Department of Psychiatry – Child and Adolescent Psychiatry
Children's Hospital Colorado
heather.buxton@cuanschutz.edu

CO-Mentor Mentees



David (Josh) Douin, MD

Assistant Professor

*Department of Anesthesiology – Critical Care
University of Colorado Anschutz Medical Campus
University of Colorado Hospital*

david.douin@cuanschutz.edu

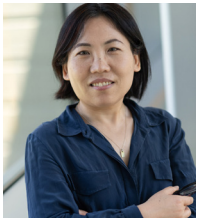


Krista Eschbach, MD

Assistant Professor

*Department of Pediatrics - Neurology
University of Colorado Anschutz Medical Campus
Children's Hospital Colorado*

krista.eschbach@childrenscolorado.org



Xiying Fan, PhD

Assistant Professor

*Department of Dermatology
Gates Institute
University of Colorado Anschutz Medical Campus*

xiying.fan@cuanschutz.edu



Andrea Jimenez-Zambrano, PhD, MPH

Assistant Professor

*Department of Pediatrics
University of Colorado Anschutz Medical Campus*

andrea.jimenez-zambrano@cuanschutz.edu

CO-Mentor Mentees



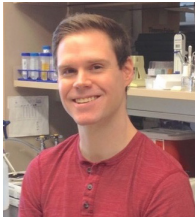
Dana Kamara, PhD

*Assistant Professor
Department of Pediatrics – Pulmonary and
Sleep Medicine
University of Colorado Anschutz Medical Campus
Children’s Hospital Colorado*
dana.kamara@childrenscolorado.org



Katherine Kissler, PhD

*Assistant Professor
College of Nursing – Maternal Child Health
University of Colorado Anschutz Medical Campus*
katherine.kissler@cuanschutz.edu



Andrew Libby, PhD

*Post-Doctoral Fellow
Department of Medicine – Endocrinology,
Metabolism, and Diabetes
University of Colorado Anschutz Medical Campus*
andrew.libby@ucdenver.edu



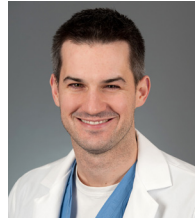
Manoel Lixandrao, PhD

*Post-Doctoral Fellow
Department of Pediatrics - Nutrition
University of Colorado Anschutz Medical Campus*
manoel.lixandrao@cuanschutz.edu

CO-Mentor Mentees



Daniele Marcy, MD
Post-Doctoral Fellow
Department of Rheumatology
University of Colorado Anschutz Medical Campus
University of Colorado Hospital
Denver Health
Denver Veterans Affairs Medical Center
daniele.marcy@cuanschutz.edu



Blake Martin, MD
Assistant Professor
Department of Pediatrics – Critical Care Medicine
University of Colorado Anschutz Medical Campus
Children’s Hospital Colorado
blake.martin@childrenscolorado.org



Gordon Matthewson, BA
MD Candidate
University of Colorado Anschutz Medical Campus
gordon.matthewson@cuanschutz.edu



Fred Milgrim, MD
Faculty Fellow
Emergency Department
Denver Health
frederick.milgrim@cuanschutz.edu

CO-Mentor Mentees



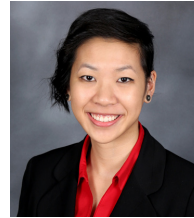
Dustin Nash, MD

Assistant Professor

Department of Pediatrics – Cardiology

Children's Hospital Colorado

dustin.nash@childrenscolorado.org



Hai Nguyen-Tran, MD

Assistant Professor

Department of Pediatrics – Infectious Diseases

University of Colorado Anschutz Medical Campus

Children's Hospital Colorado

hai.nguyen-tran@childrenscolorado.org



Brandon Osborn, PhD

Post-Doctoral Fellow

Department of Pediatrics - Nutrition

University of Colorado Anschutz Medical Campus

brandon.osborn@cuanschutz.edu



Sarah Pihl, DNP

Senior Instructor

Department of Pediatrics – Hospital Medicine

Children's Hospital Colorado

sarah.pihl@childrenscolorado.org

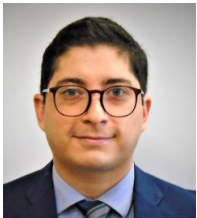
CO-Mentor Mentees



Inna Powers, MD
Post-Doctoral Fellow
Department of Pediatric Rheumatology
Children's Hospital Colorado
inna.powers@childrenscolorado.org



Sarah Rhoads, MD
Clinical Fellow
Department of Medicine – Pulmonary Sciences and
Critical Care
University of Colorado Anschutz Medical Campus
National Jewish Health
Denver Health
Denver Veterans Affairs Medical Center
sarah.rhoads@cuanschutz.edu



Ramiro Rodriguez, MD
Instructor
Department of Dermatology
University of Colorado Anschutz Medical Campus
ramiro.rodriguez@cuanschutz.edu



Gabriela Suarez, PhD
Assistant Professor
Department of Pediatrics – Developmental
Pediatrics
University of Colorado Anschutz Medical Campus
Children's Hospital Colorado
gabriela.suarez@childrenscolorado.org

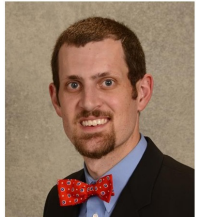
CO-Mentor Mentees



Deanna Swain, PhD
Assistant Professor
Department of Pediatrics – Developmental Pediatrics
University of Colorado Anschutz Medical Campus
Children’s Hospital Colorado
deanna.swain@childrenscolorado.org



Emily Van Zeeland, BS
DVM/PhD Student
Department of Clinical Sciences
College of Veterinary Med and Biomedical Sciences
Colorado State University
Emily.Van_Zeeland@colostate.edu



Joshua Williams, MD
Assistant Professor
Department of General Academic Pediatrics - Ambulatory Care Services
Denver Health
joshua.williams@dhha.org

CO-Mentor Mentors

of 2023-2024

CO-Mentor Mentors



Tell Bennett, MD, MS

Professor

Vice Chair of Clinical Informatics, Department of

Biomedical Informatics

Biomedical Informatics and Pediatrics

(Critical Care Medicine)

University of Colorado Anschutz Medical Campus

tell.bennett@cuanschutz.edu



**Laura M. Borgelt, PharmD, MBA,
FCCP, BCPS**

Associate Vice Chancellor of Strategic Initiatives

Chief Operating Officer, Gates Institute

*Professor, Departments of Clinical Pharmacy and
Family Medicine*

University of Colorado Anschutz Medical Campus

laura.borgelt@cuanschutz.edu



Kristen E. Boyle, MS, PhD

Associate Professor

Department of Pediatrics - Nutrition

Co-Director, Basic Science Research Core,

LEAD Center

University of Colorado Anschutz Medical Campus

kristen.boyle@cuanschutz.edu



Robert P. Dellavalle MD, PhD, MSPH

Professor of Dermatology and Public Health

University of Colorado School of Medicine

Colorado School of Public Health

US Department of Veterans Affairs National

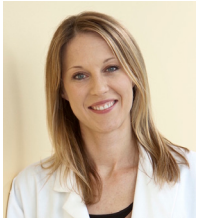
Dermatology Executive Program Director

Dermatology Chief

Rocky Mountain Regional VA Medical Center

robert.dellavalle@ucdenver.edu

CO-Mentor Mentors



Kristen Demoruelle, MD, PhD
Associate Professor
Associate Division Head of Clinical Research
Department of Medicine - Rheumatology
University of Colorado Anschutz Medical Campus
Kristen.Demoruelle@cuanschutz.edu



Brooke Dorsey Holliman, PhD, MA
Associate Professor
Director of the ACCORDS Qualitative and Mixed
Methods Research Core
Department of Family Medicine
University of Colorado Anschutz Medical Campus
brooke.dorseyholliman@cuanschutz.edu



Jolie Eirich, MSN, CPNP-AC/PC
Senior Instructor, Pediatric Hospital Medicine
Director, Pediatric Hospital Medicine Advanced
Practice Program
Co-Director, Pediatric Inpatient APP Fellowship
Interim Director, Faculty Advanced Practice
University of Colorado Department of Pediatrics &
Children's Hospital Colorado
jolie.eirich@childrenscolorado.org



Ana Fernandez-Bustamante, MD, PhD, FASA
Professor
Department of Anesthesiology
University of Colorado Anschutz Medical Campus
ana.fernandez-bustamante@cuanschutz.edu

CO-Mentor Mentors



Bailey Fosdick, PhD
Associate Professor
Department of Biostatistics & Informatics
University of Colorado Anschutz Medical Campus
bailey.fosdick@cuanschutz.edu



Elizabeth Griffith, PhD
Associate Professor
Director of Psychology Training in
Developmental Pediatrics
Department of Pediatrics- Developmental
Pediatrics
University of Colorado Anschutz Medical Campus
Children's Hospital Colorado
elizabeth.griffith@childrenscolorado.org



Matthew Haemer, MD, MPH
Professor
Director of Clinical Fellowship in Nutrition and Obesity
Department of Pediatrics - Nutrition
University of Colorado Anschutz Medical Campus
matthew.haemer@cuanschutz.edu



Teri L. Hernandez, PhD, RN
Professor
Associate Dean of Research and Scholarship
College of Nursing
University of Colorado Anschutz Medical Campus
teri.hernandez@cuanschutz.edu

CO-Mentor Mentors



Kelly G Knupp, MD, MSCS, FAES
Interim Chief, Section of Child Neurology
Associate Professor of Pediatrics and Neurology
University of Colorado Anschutz Medical Campus
Children's Hospital Colorado
kelly.knupp@childrenscolorado.org



Paul MacLean, PhD
Professor of Medicine and Pathology
Director of Colorado NORC
Department of Medicine - Endocrinology, Metabolism,
and Diabetes
University of Colorado Anschutz Medical Campus
paul.maclea@cuanschutz.edu



Beth McManus, PT, MPH, ScD
Associate Professor
Director of the MPH Program
Department of Health Systems,
Management and Policy
Colorado School of Public Health
beth.mcmanus@cuanschutz.edu



Kevin Messacar, MD, PhD
Associate Professor
Department of Pediatrics - Infectious Diseases
University of Colorado Anschutz Medical Campus
Children's Hospital Colorado
kevin.messacar@childrenscolorado.org

CO-Mentor Mentors



Sean T. O'Leary, MD, MPH

*Professor of Pediatrics
Sections of Pediatric Infectious Diseases/Epidemiology
and General Academic Pediatrics
University of Colorado Anschutz Medical Campus
Children's Hospital Colorado
Director, Pediatric Practice-Based Research Network
(COCONet)
Chair, Committee on Infectious Diseases, American
Academy of Pediatrics
Investigator, ACCORDS
sean.oleary@cuanschutz.edu*



Brian Pitts, MD

*Assistant Professor
Department of Pediatrics - Adolescent Medicine
University of Colorado Anschutz Medical Campus
brian.pitts@cuanschutz.edu*



Peter S. Pressman, MD

*Associate Professor
Director, Communication and Speech Analysis in
Neurocognitive Lab
Department of Neurology - Behavioral Neurology
University of Colorado Anschutz Medical Campus
peter.pressman@cuanschutz.edu*



Matthew Riscinti, MD

*Assistant Professor
Department of Emergency Medicine
Emergency Ultrasound
Denver Health
matthew.riscinti@dhha.org*

CO-Mentor Mentors



Yiqun Shellman, PhD
Associate Professor
Director of Research Mentoring
Department of Dermatology
University of Colorado Anschutz Medical Campus
yiqun.shellman@cuanschutz.edu



Katie Sikes, PhD
Assistant Research Professor
Preclinical Surgical Research Laboratory
Department of Clinical Sciences
Colorado State University
Katie.Sikes@colostate.edu



Stacey Simon, PhD, DBSM
Associate Professor
Associate Director of Behavioral Sleep Medicine
Department of Pediatrics - Pulmonary & Sleep Medicine
University of Colorado Anschutz Medical Campus
Children's Hospital Colorado
stacey.simon@childrenscolorado.org



Celeste St. John-Larkin, MD
Assistant Professor
Anschutz Chair in Perinatal Mental Health,
Children's Hospital Colorado;
Medical Director Healthy Expectations Perinatal
Mental Health Program, Colorado Center for
Women's Behavioral Health and Wellness
Department of Psychiatry - Child and Adolescent Psychiatry
University of Colorado Anschutz Medical Campus
celeste.stjohn@cuanschutz.edu

CO-Mentor Mentors



Christine Swanson, MD, MCR
Associate Professor
Department of Medicine - Endocrinology,
Metabolism & Diabetes
University of Colorado Anschutz Medical Campus
christine.swanson@cuanschutz.edu



Johannes von Alvensleben, MD
Associate Professor
Department of Pediatrics – Cardiology
University of Colorado Anschutz Medical Campus
Children’s Hospital Colorado
johannes.vonalvensleben@childrenscolorado.org



Michael Wechsler, MD, MMSc
Professor
Director NJH Asthma Institute
Assoc VP Innovation and Industry Relations
Department of Pulmonary, Critical Care and
Sleep Medicine
National Jewish Health
wechslerm@NJHealth.org



An Institute at the University of Colorado Denver | cuanschutz.edu/cctsi | 720-848-7100

The University of Colorado is committed to diversity and equality in education and employment.

CCTSI is supported in part by Colorado CTSA Grant UL1 TR002535 from NCATS / NIH.