



Colorado Clinical and Translational  
Sciences Institute (CCTSI)

UNIVERSITY OF COLORADO **DENVER** | **ANSCHUTZ MEDICAL CAMPUS**

# **Colorado Mentoring Training (CO-Mentor) Program Directory | 2017-2018**

## CONTENTS

<b>CCTSI</b> Program	1
<b>CCTSI</b> Leadership	2
<b>CO-Mentor</b> Program	3
<b>CO-Mentor</b> Faculty & Staff	4
<b>CO-Mentor</b> Mentees	6
<b>CO-Mentor</b> Mentors	14

## The CCTSI Program

The Colorado Clinical and Translational Sciences Institute (CCTSI), created in 2008, includes the University of Colorado Anschutz Medical Campus, University of Colorado Denver, University of Colorado Boulder, Colorado State University, six major hospitals, and health care organizations and local communities. The CCTSI will:

- Expand this statewide academic home for clinical and translational research.
- Implement new clinical research management strategies to improve quality, safety, efficiency, cost-effectiveness, and innovative team science as well as introduce new software systems and workflows.
- Centralize the delivery of resources, services, and technologies.
- Incorporate key concepts of community engagement into the full spectrum of translational research.
- Increase the translational research workforce capacity through a broad curriculum of education, training, and career development opportunities.

A rigorous tracking, assessment, and evaluation program with a formal quality and process improvement component will ensure the best use of resources while protecting the safety of research study participants. These programs will be centralized at the University of Colorado Anschutz Medical Campus, which is adjacent to participating schools, research laboratories, three hospitals, and a biomedical corporate park.

## CCTSI Leadership



**Ronald J. Sokol, MD, FAASLD**  
**Director, Colorado Clinical and Translational Sciences Institute**

*Professor and Vice Chair of Pediatrics  
Arnold Silverman, MD, Endowed Chair in Digestive Health  
Assistant Vice Chancellor for Clinical and Translational Science, University of Colorado Denver  
Chief, Section of Pediatric Gastroenterology, Hepatology and Nutrition and the Digestive Health Institute  
ronald.sokol@ucdenver.edu  
ronald.sokol@childrenscolorado.org  
720-777-6669*

# Colorado Mentoring Training (CO-Mentor) Program

The **Colorado Mentoring Training (CO-Mentor) Program** is a series of integrated workshops that uses evidence-based strategies to teach mentor/mentee pairs the skills they need to get the most out of their mentoring relationships.

Most training occurs in mentor/mentee pairs; however, some activities will be for mentors or mentees separately. The goal is to help participants build practical, overarching skills for mentoring success.

The CO-Mentor program addresses the following Topics:

- Career mapping and creating a career development plan
- Setting goals
- CV building
- Understanding your preferred communication style with the Communication Preference Questionnaire™ (CPQ)
- Establishing the mentor/mentee relationship
- Writing effective mentor letters
- Giving and receiving effective feedback
- Building an effective mentoring team
- Identifying personal strengths and values
- Professional networking
- Promoting academic persistent
- Understanding and managing the financial aspects of an academic career

## CO-Mentor Faculty and Staff



**Gregory L. Austin, MD, MPH**

*Director, CCTSI CO-Mentor Program  
Director, Junior Faculty Development  
Department of Medicine -  
Gastroenterology and Hepatology  
University of Colorado,  
Anschutz Medical Campus  
gregory.austin@ucdenver.edu  
303-724-1857*



**Anne M. Libby, PhD**

*Professor and Vice Chair for Academic Affairs  
University of Colorado  
Anschutz Medical Campus,  
Department of Emergency Medicine  
Director, Clinical Faculty Scholars Program  
Co-Director, Colorado Mentoring Training  
Program (CO-Mentor)  
Co-Director, Doris Duke Charitable  
Foundation Fund to Retain Clinical  
Scientists Program  
University of Colorado,  
Anschutz Medical Campus  
anne.libby@ucdenver.edu  
720-848-6794*



**Galit Mankin, MSW**

*Program Administrator,  
Clinical Science Graduate Program  
Programs Manager, Education Training  
and Career Development (ETCD), CCTSI  
University of Colorado,  
Anschutz Medical Campus  
galit.mankin@ucdenver.edu  
720-848-6249*

**CO-Mentor** Mentees

of 2017-2018

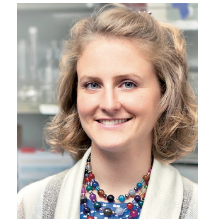
## CO-Mentor Mentees



**Yael Aschner, MD**  
*Assistant Professor*  
*Department of Medicine -*  
*Pulmonary Sciences and Critical Care Medicine*  
*University of Colorado,*  
*Anschutz Medical Campus*  
 yael.aschner@ucdenver.edu  
 303-398-1193



**Bre Barela, PsyD Candidate**  
*Student; Research Specialist*  
*School Psychology*  
*University of Colorado,*  
*Anschutz Medical Campus*  
*Kaiser Permanente - Institute for Health Research*  
 breanne.barela@ucdenver.edu  
 970-389-2888



**Josiane L. Broussard, PhD**  
*Assistant Research Professor*  
*Department of Integrative Physiology*  
*University of Colorado Boulder*  
 josiane.broussard@colorado.edu  
 303-735-7979



**Samantha Brown, PhD, MA, LPC**  
*Postdoctoral Fellow*  
*Department of Psychiatry*  
*University of Colorado,*  
*Anschutz Medical Campus*  
 samantha.m.brown@ucdenver.edu  
 720-310-5655



**Joshua J. Bear, MD, MA**  
*Assistant Professor*  
*Department of Pediatrics - Child Neurology*  
*Children's Hospital Colorado*  
 joshua.bear@childrenscolorado.org  
 720-777-6138



**Adria Boucharel, MD**  
*Assistant Professor*  
*Advisory College Program Faculty Advisor*  
*(SOM) & Educator*  
*Department of Pediatric Anesthesiology*  
*University of Colorado,*  
*Anschutz Medical Campus*  
 adria.boucharel@childrenscolorado.org  
 720-777-6224



**Heather Coats, PhD, APRN-BC**  
*Assistant Professor*  
*College of Nursing*  
*University of Colorado,*  
*Anschutz Medical Campus*  
 heather.coats@ucdenver.edu  
 303-724-3740



**Tessa Crume, PhD, MSPH**  
*Assistant Professor*  
*Department of Epidemiology*  
*Colorado School of Public Health*  
*University of Colorado,*  
*Anschutz Medical Campus*  
 tessa.crume@ucdenver.edu  
 303-724-4452

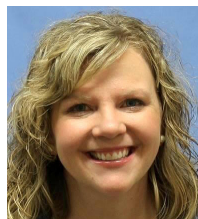
## CO-Mentor Mentees

## CO-Mentor Mentees



### **Nate De Jong, MPH**

*Graduate Student  
Department of Medicine -  
Endocrinology, Diabetes, and Metabolism  
University of Colorado,  
Anschutz Medical Campus  
nathan.dejong@ucdenver.edu*



### **Jessica Ehrig, MD**

*3rd Year Fellow  
Department of Obstetrics and  
Gynecology - Maternal Fetal Medicine  
University of Colorado,  
Anschutz Medical Campus  
jessica.ehrig@ucdenver.edu  
806-470-6260*



### **Catherine (Katie) G. Derington, PharmD**

*Post-Doctoral Fellow  
Department of Clinical Pharmacy  
Skaggs School of Pharmacy and  
Pharmaceutical Sciences  
University of Colorado,  
Anschutz Medical Campus  
Kaiser Permanente Colorado  
catherine.derington@ucdenver.edu  
303-550-1980*



### **Elizabeth Gillespie, MD**

*Division of Hospital Medicine  
Denver Health and Hospital Authority  
Assistant Professor of Medicine  
University of Colorado,  
Anschutz Medical Campus  
elizabeth.gillespie@dhha.org*

## CO-Mentor Mentees



### **Ryan Good, MD**

*Assistant Professor  
Department of Pediatrics -  
Critical Care Medicine  
Children's Hospital Colorado  
ryan.good@childrenscolorado.org  
585-576-7577*



### **Iain Konigsberg, BS**

*Student, Human Medical  
Genetics & Genomics  
University of Colorado,  
Anschutz Medical Campus  
iain.konigsberg@ucdenver.edu  
217-722-6015*



### **Nancy Hong, MD**

*Pediatric Pulmonary Fellow, PGY-5  
Department of Pediatrics - Pulmonary  
University of Colorado,  
Anschutz Medical Campus  
Children's Hospital Colorado  
nancy.hong@childrenscolorado.org  
402-202-8587*



### **Chelsea M. Magin, PhD**

*Assistant Professor  
Department of Medicine -  
Pulmonary Sciences and Critical Care Medicine  
Department of Bioengineering  
University of Colorado,  
Anschutz Medical Campus  
chelsea.magin@ucdenver.edu  
303-724-3344*

## CO-Mentor Mentees



**Rebecca Mullen, MD, MPH**  
*Faculty Fellow*  
 Department of Family Medicine  
 University of Colorado,  
 Anschutz Medical Campus  
 rebecca.mullen@ucdenver.edu  
 913-221-8694



**Devatha Nair, PhD**  
*Assistant Professor*  
 Department of Craniofacial Biology  
 School of Dental Medicine  
 University of Colorado,  
 Anschutz Medical Campus  
 devatha.nair@ucdenver.edu  
 303-724-0951



**Jessica L. Nelson, MD**  
*Clinical Instructor*  
*Critical Care Fellow*  
 Department of Anesthesiology  
 University of Colorado,  
 Anschutz Medical Campus  
 jessica.l.nelson@ucdenver.edu  
 608-209-1419



**Jacinda Nicklas, MD, MPH, MA**  
*Assistant Professor*  
 Department of Medicine -  
 General Internal Medicine  
 University of Colorado,  
 Anschutz Medical Campus  
 jacinda.nicklas@ucdenver.edu  
 303-724-9028



**Aviva Olsavsky, MD**  
*Post-Doctoral Fellow/Instructor Fellow*  
 Department of Psychiatry -  
 Child and Adolescent Psychiatry  
 University of Colorado,  
 Anschutz Medical Campus  
 aviva.olsavsky@ucdenver.edu



**Suchitra Rao, MBBS**  
*Assistant Professor*  
 Department of Pediatrics - Infectious Diseases,  
 Hospital Medicine, Epidemiology  
 University of Colorado,  
 Anschutz Medical Campus  
 Children's Hospital Colorado  
 suchitra.rao@childrenscolorado.org  
 720-777-2823



**Angela Rachubinski, PhD**  
*Instructor*  
*Research Manager*  
 Department of Pediatrics  
 JFK Partners  
 University of Colorado,  
 Anschutz Medical Campus  
 angela.rachubinski@ucdenver.edu  
 303-724-7366



**Danielle E. Soranno, MD**  
*Assistant Professor*  
*Pediatric Nephrologist,*  
 Children's Hospital Colorado  
 Departments of Pediatrics,  
 Bioengineering & Medicine  
 University of Colorado,  
 Anschutz Medical Campus  
 danielle.soranno@childrenscolorado.org  
 720-777-6263

## CO-Mentor Mentees



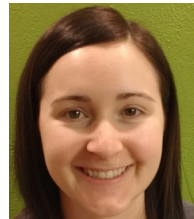
## CO-Mentor Mentees



**Taylor Triolo, MD**

*Fellow*

*Department of Pediatrics – Endocrinology  
Barbara Davis Center for Childhood Diabetes  
Children's Hospital Colorado  
taylor.triolo@childrenscolorado.org  
970-227-0053*



**Alyssa Witeof, BS**

*Professional Research Assistant  
Department of Emergency Medicine  
University of Colorado,  
Anschutz Medical Campus  
alyssa.witeof@ucdenver.edu  
614-266-7655*



**MariaFrancisca Zabalaga Palma, BS**

*Manager, Healthcare Interest Program  
Internal Medicine Special Projects  
Denver Health Medical Center  
maria.zabalaga@dhha.org  
303-596-0361*

## CO-Mentor Mentors

of 2017-2018

## CO-Mentor Mentors



### **Rebecca Allyn, MD**

*Associate Professor of Medicine  
Hospitalist  
Division of Hospital Medicine  
Denver Health  
rebecca.allyn@dhha.org  
303-906-3385*



### **Bryan C. Bergman, PhD**

*Professor  
Department of Medicine -  
Endocrinology, Diabetes, and Metabolism  
University of Colorado,  
Anschutz Medical Campus  
bryan.bergman@ucdenver.edu  
303-724-3919*



### **Linda Barbour, MD, MSPH**

*Professor  
Director of OB Diabetes Clinic  
and Co-Director of High Risk OB Clinic  
Department of Medicine – Endocrinology,  
Metabolism and Diabetes  
Department of Obstetrics and Gynecology –  
Maternal-Fetal Medicine  
University of Colorado, Anschutz Medical Campus  
lynn.barbour@ucdenver.edu  
303-724-3921*



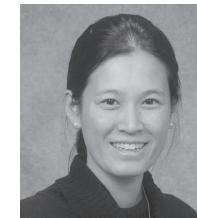
### **Audrey Bergouignan, PhD**

*Assistant Professor  
Department of Medicine -  
Endocrinology, Diabetes and Metabolism  
Anschutz Health and Wellness Center  
University of Colorado,  
Anschutz Medical Campus  
audrey.bergouignan@ucdenver.edu  
303-724-9026*



### **Ellen L. Burnham, MD, MS**

*Associate Professor  
Department of Medicine -  
Pulmonary Sciences and Critical Care Medicine  
Associate Program Director,  
Colorado CTSI KL2 Program  
Medical Director, Medical ICU,  
University of Colorado Hospital  
ellen.burnham@ucdenver.edu  
303-724-6078*



### **Angela S. Czaja, MD, MSc**

*Associate Professor  
Fellowship Program Director  
Department of Pediatrics - Critical Care Division  
University of Colorado,  
Anschutz Medical Campus  
angela.czaja@childrenscolorado.org  
303-724-2393*



### **Kevin Chapman, MD**

*Associate Professor  
Department of Pediatrics and Neurology  
University of Colorado,  
Anschutz Medical Campus  
kevin.chapman@ucdenver.edu  
720-777-6895*



### **Amanda Dempsey, MD, PhD, MPH**

*Associate Professor  
Department of Pediatrics -  
General Pediatrics  
University of Colorado,  
Anschutz Medical Campus  
amanda.dempsey@ucdenver.edu  
303-724-6679*

## CO-Mentor Mentors



**Sarah Faubel, MD**  
*Professor of Medicine  
 Associate Division Chief, Renal Division  
 University of Colorado Denver and  
 Denver VA Medical Center  
 Internal Medicine,  
 Renal and Pediatric Nephrology,  
 Children's Hospital Colorado  
 sarah.faubel@ucdenver.edu  
 303-724-4813*



**Terry C. Harper, MD**  
*Division Chief  
 Department of Obstetrics and Gynecology -  
 Maternal Fetal Medicine  
 University of Colorado,  
 Anschutz Medical Campus  
 teresa.harper@ucdenver.edu*



**Guido K. W. Frank, MD, FAED**  
*Associate Professor  
 Departments of Psychiatry and Neuroscience  
 Director, Developmental Brain Research Program  
 Pediatric Mental Health Institute,  
 Children's Hospital Colorado  
 University of Colorado,  
 Anschutz Medical Campus  
 guido.frank@ucdenver.edu  
 720-777-1909*



**Bryn Harris, PhD**  
*Associate Professor  
 School Psychology  
 School of Education and Human Development  
 University of Colorado, Denver  
 bryn.harris@ucdenver.edu  
 303-315-3899*

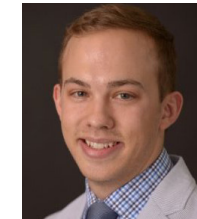
## CO-Mentor Mentors



**Tara Hendry-Hofer, RN, BSN**  
*Senior Professional Research Assistant  
 Department of Emergency Medicine  
 University of Colorado,  
 Anschutz Medical Campus  
 Tara.Hendry-Hofer@ucdenver.edu  
 303-289-0030*



**Melanie Königshoff MD, PhD**  
*Professor  
 Head, Lung Fibrosis and  
 Regeneration Program  
 Department of Medicine -  
 Pulmonary Sciences and Critical Care Medicine  
 University of Colorado,  
 Anschutz Medical Campus  
 melanie.koenigshoff@ucdenver.edu  
 303-724-0921*



**Jordan King, PharmD, MS**  
*Clinical Pharmacy Specialist, Research  
 Pharmacy Department  
 Kaiser Permanente Colorado  
 jordan.b.king@kp.org  
 303-739-3547*



**Paula Meek, PhD, RN, FAAN**  
*Professor  
 Directory of PhD Program  
 College of Nursing  
 University of Colorado,  
 Anschutz Medical Campus  
 paula.meek@ucdenver.edu  
 303-724-9225*

## CO-Mentor Mentors



### **Don Nease, MD**

*Associate Professor and Vice Chair for Research,  
Department of Family Medicine  
Green-Edelman Chair for Practice-Based Research  
President, International Balint Federation  
Director, Community Engagement  
& Research, CCTSI  
Director, State Networks of Colorado Ambulatory  
Practices & Partners (SNOCAP)  
University of Colorado, Anschutz Medical Campus  
donald.nease@ucdenver.edu  
303-724-7283*



### **Cordelia Robinson Rosenberg, PhD, RN**

*Professor of Pediatrics and Psychiatry  
Senior Policy Analyst & Advisor  
Department of Pediatrics/JFK Partners  
University of Colorado,  
Anschutz Medical Campus  
cordelia.rosenberg@ucdenver.edu  
303-724-7680*



### **Sarah Perman, MD, MSCE**

*Assistant Professor  
Department of Emergency Medicine  
University of Colorado,  
Anschutz Medical Campus  
sarah.perman@ucdenver.edu  
720-848-5593*



### **Josina Romero O'Connell, MD**

*Assistant Professor  
Clinician and DH Healthcare Interest Program  
(HIP) Associate Director  
Department of Family Medicine  
Denver Health  
josina.o'connell@dhha.org  
719-660-4094*

## CO-Mentor Mentors



### **Holger A. Russ, PhD**

*Assistant Professor  
Department of Pediatrics  
Barbara Davis Center for Diabetes  
University of Colorado,  
Anschutz Medical Campus  
holger.russ@ucdenver.edu  
303-724-8544*



### **Marci Sontag, PhD, MS**

*Associate Professor  
Department of Epidemiology  
Colorado School of Public Health  
University of Colorado,  
Anschutz Medical Campus  
marci.sontag@ucdenver.com  
303-724-4430*



### **Corey A. Rynders, PhD**

*Assistant Professor  
Department of Medicine - Geriatric Medicine  
University of Colorado,  
Anschutz Medical Campus  
corey.rynders@ucdenver.edu  
720-848-6461*



### **Jeffrey W. Stansbury, PhD**

*Senior Associate Dean for Research  
Professor and Vice-Chair,  
Department of Craniofacial Biology  
School of Dental Medicine  
University of Colorado,  
Anschutz Medical Campus  
jeffrey.stansbury@ucdenver.edu  
303-724-1044*



**Sarah Enos Watamura, PhD**

Associate Professor  
Department of Psychology  
University of Denver  
swatamura@du.edu  
303-871-4130



**Ivana V. Yang, PhD**

Associate Professor  
Department of Medicine -  
Biomedical Informatics and Personalized Medicine  
and Pulmonary and Critical Care Science  
University of Colorado,  
Anschutz Medical Campus  
ivana.yang@ucdenver.edu  
303-724-6449



**Myron Yaster, MD**

Visiting Professor  
Department of Anesthesiology  
Children's Hospital Colorado  
University of Colorado,  
Anschutz Medical Campus  
myron.yaster@childrenscolorado.org  
myron.yaster@ucdenver.edu  
720-777-3523



**Edith Zemanick, MD, MSCS**

Associate Professor  
Director, Cystic Fibrosis Foundation  
Therapeutics Development Center  
Associate Director, Pediatric CF Center,  
Children's Hospital Colorado  
Department of Pediatrics - Pulmonary Medicine  
University of Colorado,  
Anschutz Medical Campus  
edith.zemanick@childrenscolorado.org  
720-777-5426

This image shows a single sheet of white paper with horizontal ruling lines. The lines are evenly spaced and run across the width of the page. There are no margins, text, or other markings on the paper.

[illegible]



**An Institute at the University of Colorado Denver | [cctsi.ucdenver.edu](https://cctsi.ucdenver.edu) | 720-848-7100**

The University of Colorado is committed to diversity and equality in education and employment.

CCTSI is supported in part by Colorado CTSA Grant UL1 TR001082 from NCATS / NIH.