



# Colorado Clinical and Translational Sciences Institute (CCTSI)

Clinical Translational Research Center (CTRC)

University of Colorado Anschutz Health Sciences Building

1890 N Revere Ct,  
Aurora, CO 80045

## Welcome

### Introduction

Hello and welcome to the CTRC Outpatient Clinic at the new Anschutz Health Science Building (AHSB). The Clinic is in the NE corner of the 6th floor, accessible by the elevators in the NW end of the first floor.

*"Through our many programs and services, we provide the infrastructure to help build research teams of the future, speed the development of new treatments and improve human health"*

### PRA Clinic Appointment Procedure

PRAs can wait for participants in the PRA landing space.

#### Participant Check-In

1. Participants will check-in at the front desk and their arrival status will be displayed in the (scheduler portal).
2. Once the participant has checked-in they will be escorted to either an exam room or the phlebotomy room.
  - a. If you room a participant, please alert a nurse that the participant is ready to be seen.
  - b. Participants should be escorted directly to an exam room if the visit requires more than a single phlebotomy. IN this case, blood draw/s will occur in the exam room, reducing the need to move the participant into and out of the phlebotomy lab.
3. Appointments that do not require a PRA will be fulfilled by the CTRC Nursing Staff.

### Appointment Considerations

- Please ensure your participants have acquired the proper parking credentials before their visit.
- Please ensure all rooms and resources have been properly cleaned after your visit has concluded.

## Resource Overview

### Exam Rooms (1-10)

#### Resources Included:

- Exam Table (3-10)
- Desk with stool
- Computer
- Visitor Chairs (1)
- \*Negative Flow (isolation) Rooms (8-9)
  - \*Stretchers (1-2)



### DEXA Imaging Room (6015)

#### Resources Included:

- DEXA Table (2)
- HR-pqCT
- Desk with stool (2)
- Computer (2)
- Visitor Chairs (2)



### Infusion Suite (6038)

#### Resources Included:

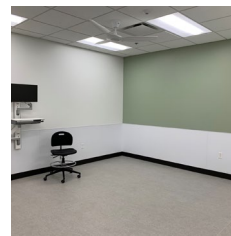
- Infusion Chairs (5)
- Computer
- Visitor Chairs (5)
- Restroom



### ECHO Imaging Room (11)

#### Resources Included:

- Echocardiogram Bed
- Computer
- Visitor Chairs (1)
- Desk with stool
- Fibroscan



### Procedure Room (12)

#### Resources Included:

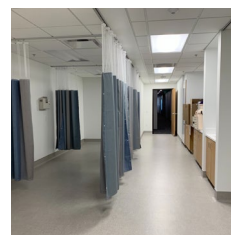
- Stretcher
- Computer
- Visitor Chairs (1)
- Desk with Stool



### Phlebotomy Room

#### Resources Included:

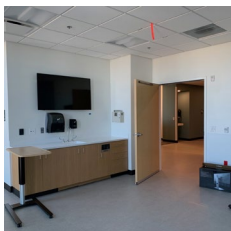
- Phlebotomy Chairs (4)
- Courier Fridge
- Courier Room Temperature Bucket
- Study team processing room is adjacent



### Large Procedure Rooms (clamps) (15 & 16)

#### Resources Included:

- Hospital Bed
- Computer
- Desk with Stool
- Visitor Chairs (2)
- Private Restroom
- Television




### Core Lab

#### Resources Included:

- Specimen Processing
- Specimen Storage



## Resource Overview Cont.

 <p><b>Clinical Exercise Lab</b> <b>Resources Included:</b></p> <ul style="list-style-type: none"> <li>● Hospital Bed</li> <li>● Desk with stool</li> <li>● Computer</li> <li>● Visitor Chairs (2)</li> <li>● Treadmills (2)</li> <li>● Stationary Bikes (2)</li> </ul> <p><b>Kin-Com Exam Room (6014)</b> <b>Resources Included:</b></p> <ul style="list-style-type: none"> <li>● Kin-Com Isokinetic Dynamometer</li> <li>● Computer</li> <li>● Desk with Stool</li> <li>● Visitor Chairs (1)</li> </ul> <p><b>Nutrition Kitchen (6023)</b> <b>Resources Included:</b></p> <ul style="list-style-type: none"> <li>● Refrigerator</li> <li>● Food Preparation Table</li> </ul>	 <p><b>Vitals Station</b> <b>Resources Included:</b></p> <ul style="list-style-type: none"> <li>● Vital Acquisition</li> <li>○ Stadiometer</li> <li>○ Scale</li> <li>● Specimen Collection Window</li> <li>● Sphygmomanometer</li> <li>○ Chair</li> </ul> <p><b>Restrooms</b> <b>Locations:</b></p> <ul style="list-style-type: none"> <li>● Restroom 1 (Waiting Room)</li> <li>● Restroom 2 (Nursing Room)</li> <li>● Restroom 3 (Exercise Locker Rooms)</li> <li>● Restroom 4 (Waiting Lounge/ Elevator)</li> </ul> <p><b>Storage Locations</b> <b>Locations:</b></p> <ul style="list-style-type: none"> <li>● Soiled Utility Room (6025) -*Badge access</li> <li>● Medication Storage (6036) (CTRC STAFF ONLY) -*Badge access</li> </ul>
---	---

## Clinic Considerations

- Courier pick up ONCE DAILY from the phlebotomy refrigerator only for non-stat samples only.
- Restroom 1 (waiting room) is to be used for sample collection only – please direct participants in the CTRC Waiting Room to the elevator restrooms.
- Phlebotomy room is for simple phlebotomy only (no vitals/no H&Ps).

# CTRC Outpatient Floor Plan





## Important Links

- CTRC Move Webpage

[CTRC Move | CCTSI](#)