

# 2026 CCTSI

## PEET Grant Program

### Overview

---

Bethany Kwan, PhD, MSPH  
PEET Program Co-Lead

Neil Aggarwal, MD, MHSc  
PEET Program Co-Lead

Sarah Kautz, PhD  
PEET Grant Program Coordinator

[cctsi.cuanschutz.edu](https://cctsi.cuanschutz.edu)



Colorado Clinical and Translational  
Sciences Institute (CCTSI)

UNIVERSITY OF COLORADO DENVER | ANSCHUTZ MEDICAL CAMPUS





# CCTSI Element E: PEET

Pragmatic EHR-Embedded Trials (PEET)

2023-2030



Colorado Clinical and Translational  
Sciences Institute (CCTSI)

UNIVERSITY OF COLORADO **DENVER** | **ANSCHUTZ MEDICAL CAMPUS**



# Pragmatic Trials

## Pragmatic Clinical Trials

Large-scale trials conducted in routine clinical care settings, involving:

- Interventions delivered by existed health care personnel through usual processes and systems of care
- Evaluations of outcomes using data collected as part of routine care

Weinfurt KP, Hernandez AF, Coronado GD, et al. Pragmatic clinical trials embedded in healthcare systems: generalizable lessons from the NIH Collaboratory. BMC medical research methodology. 2017 Dec;17:1-0.

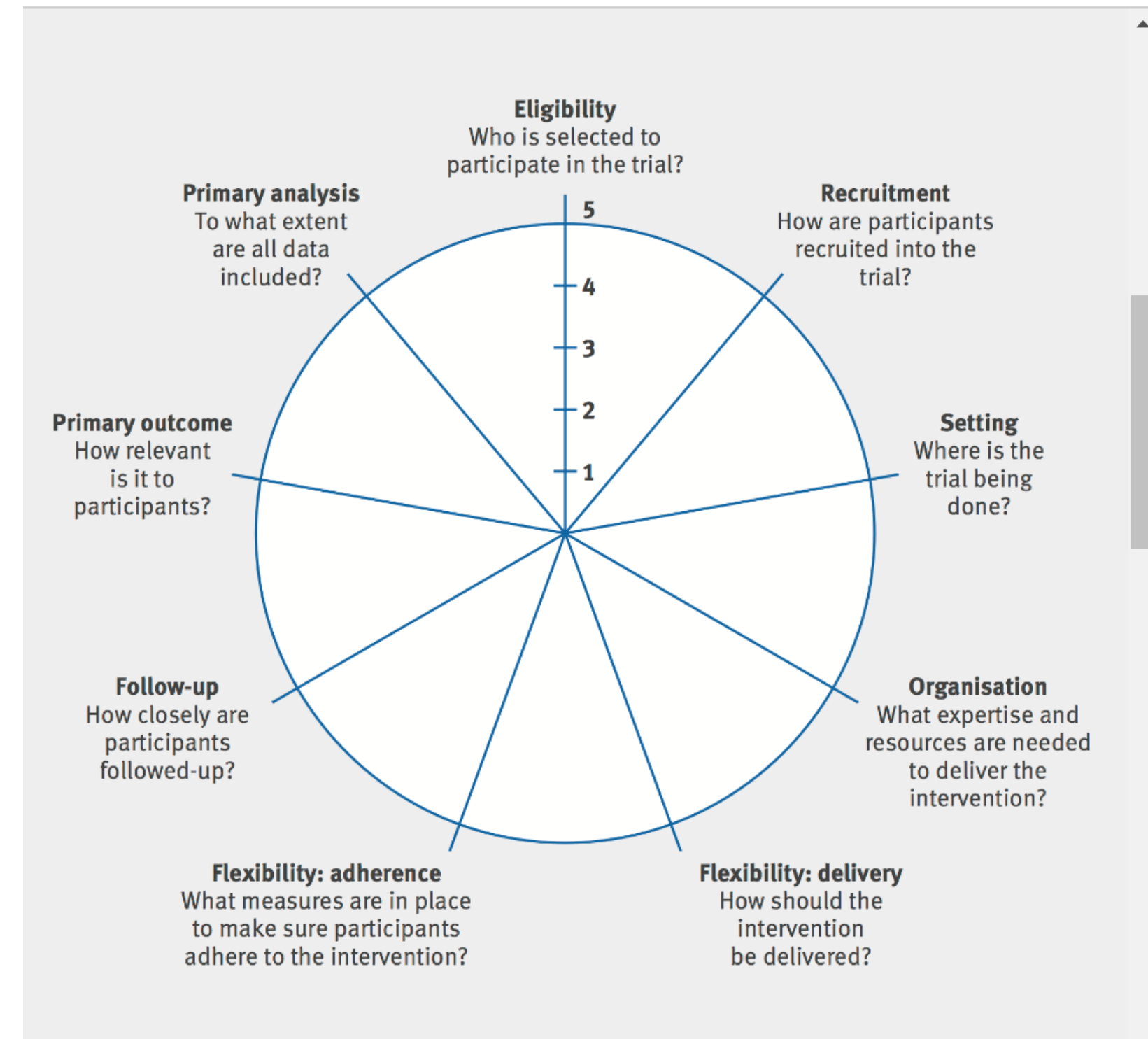


Figure: The PRagmatic-Explanatory Continuum Indicator Summary 2 (PRECIS-2) wheel.

Adapted from [BMJ 2015;350:h2147](https://doi.org/10.1186/s13063-015-0688-1)

<https://precis-2.org/>

# EHR-Embedded Trials

## EHR-Embedded Trials

Use of EHR systems to conduct pragmatic clinical trials to facilitate:

- Identifying patient participants/cohorts and/or clinical phenotypes
- E-consent and participant communication
- Randomization, assignment, and delivery of interventions
- Assessment of outcomes/safety (including patient-reported outcomes and free text/narrative)
- Real-time tracking of accrual, trial data, diversity, and representativeness





# PEET Goals

## PEET Program Goals

1

### Build

...the PEET Research Program infrastructure and governance needed for prioritization and support of proposed pragmatic EHR-embedded clinical trials in the UCHealth system.

2

### Engage

...partners in co-design of user guidance materials and protocols for implementation and use PEET infrastructure, including patient and clinician engagement processes.

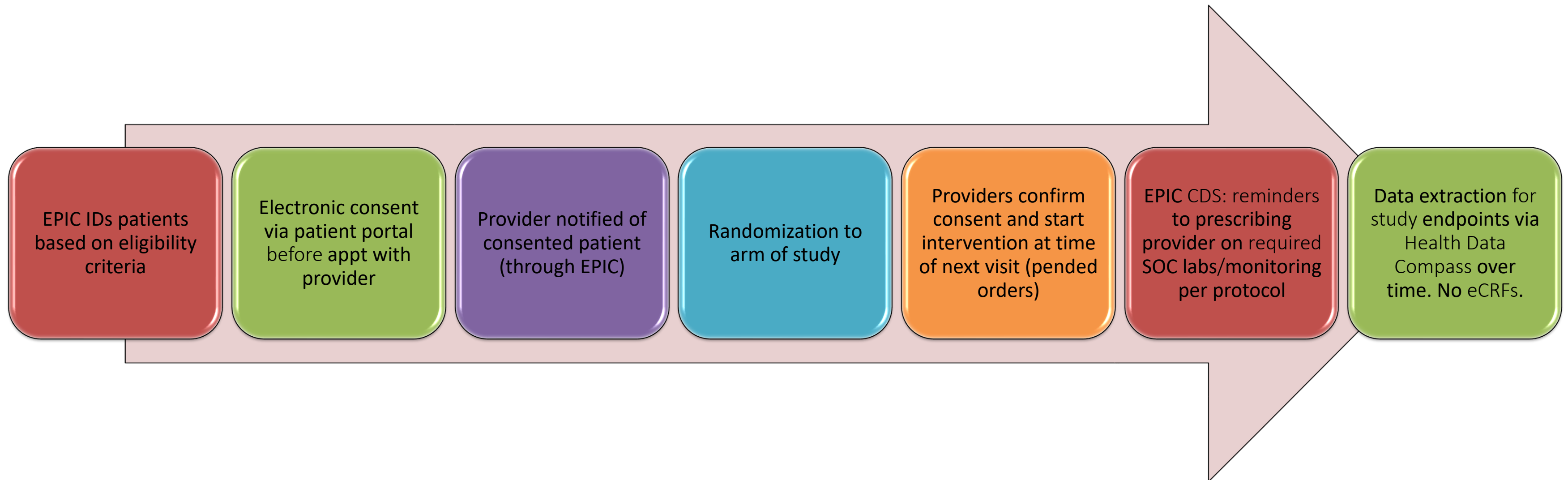
3

### Conduct

...pragmatic EHR-embedded clinical trials and use lessons learned to inform procedures for other EHR-embedded trials, with funding for up to 2 ongoing demonstration projects per year.

# PEET Demonstration Projects

**PEET Demonstration Project #1 (2023-2025):** A Randomized, Pragmatic, Adaptive Trial of Metformin for Glucose Intolerance or Increased Body Mass Index in Prostate Cancer Patients (PragMet) (Principal Investigator: Thomas Flaig, MD)



# PEET Demonstration Projects

**PEET Demonstration Project #2 (2024-2026):** Optimizing Care in Critically ill at UCHHealth by Liberalizing the Target O<sub>2</sub> in mechanically-ventilated ICU patients (OCCULT O<sub>2</sub>) (Principal Investigators: Neil Aggarwal, MD and Peter Sottile, MD)

OCCULT O<sub>2</sub>



BALANCING THERAPIES  
IN CRITICAL CARE

## Two phase study:

Phase 1: Implement an EHR (Epic) orderset with a higher oxygen saturation target range (SpO<sub>2</sub> 90-96%) in a randomized order and evaluate outcomes including occult hypoxemia (OH).

Phase 2: Assess effectiveness of an EHR-based clinical decision support tool for OH detection and mitigation.

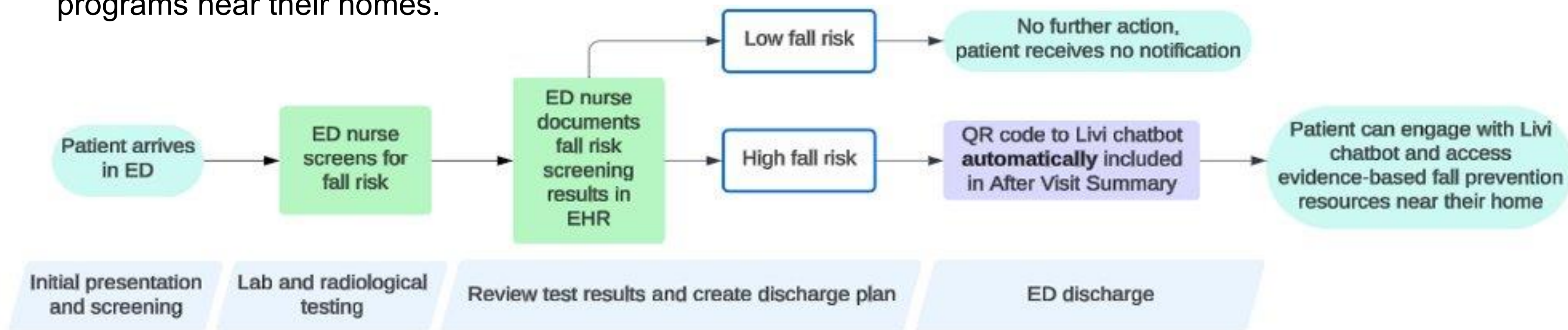




# PEET Demonstration Projects

**PEET Demonstration Project #3 (2025-2027):** Awareness and Linkage to Resources for At-Risk Emergency Department Patients(ALERT-ED) (Principal Investigators: Elizabeth Goldberg, MD and Jennifer Portz, MSW, PhD)

This is a multiple-ED, cluster-randomized, multiple crossover trial that tests the ALERT-ED intervention among older patients who present to UCHealth ED region and screen at high risk for falls. Patients will either receive educational resources or a link to the virtual assistant, UCHealth's Livi Chatbot, according to the randomization of the EDs. ALERT-ED notifies patients of their fall risk, provides education surrounding falls, and guides patients to choose among free and low-cost community fall prevention programs near their homes.





# CCTSI PEET Grant Award Eligibility

- CCTSI Members
- Principal Investigators (PI) must be a full time ( $\geq 0.5$  FTE) at a CCTSI partnering institution and Associate Professors or above with an established record of obtaining research funding awards as a PI.
- There can be up to one additional multiple principal investigator (MPI), who must be at least at the Assistant Professor level.
- We encourages applications from all individuals including those historically underrepresented in biomedical research.

## Partnering Institutions

CU Anschutz Medical Campus  
CU Boulder  
CU Denver  
Colorado State University  
University of Colorado Hospital  
Children's Hospital Colorado  
VA Eastern CO Health Care System  
Kaiser Permanente Colorado

<https://cctsi.cuanschutz.edu/aboutus/partnering-institutions>

<https://cctsi.cuanschutz.edu/funding/membership>





# Restrictions

- The project cannot be currently funded or underway.
- All applications should have unique and distinct specific aims from any ongoing projects by the PIs.
- If you are proposing a drug or device trial, applications are restricted to Phase II. Phase III or Phase IV drug or device trials will not be supported.





# Exclusions

- CCTSI PEET awards may not be used to support research conducted outside of the United States.
- Individuals who have been PI/MPI on previously funded PEET awards are not eligible to apply as PI/MPI on additional PEET awards.
- Applications proposing to continue the work of previously funded CCTSI PEET projects are not allowed.

# 2026 PEET Grant Cycle Timeline

|                                    | PEET GRANT               |
|------------------------------------|--------------------------|
| RFA announcement                   | 11/17/2025               |
| Informational call #1              | 12/10/2025 at 8:30am MT  |
| Letter of intent due               | 12/16/2025 by 11:59pm MT |
| Invitation to submit full proposal | 12/19/2025               |
| Informational call #2              | 01/12/2026 at 2:00pm MT  |
| Application due date               | 02/09/2026 by 11:59pm MT |
| Review                             | 02/10/2026               |
| Notice of award                    | Mid to Late June 2026    |
| 2026 award cycle                   | 08/01/2026-07/31/2028    |





# Intent to Apply Form

Please complete the **mandatory, competitive** Intent to Apply form by **December 16, 2025**.

## The Intent to Apply form requests:

- Descriptive title of proposed research
- Principal investigator name, credentials, faculty rank, CCTSI partnering institution, and department/division
- Multiple principal investigator name, credentials, faculty rank, CCTSI partnering institution, and department/division
- A PDF document including the project title, PI name, and a concise description of the proposed project that describes the research question and an overview of the study design. **Word limit: 500 words**
- A checklist for PEET minimum requirements and EHR integration features

The Intent to Apply form is mandatory and will be used to determine which applications will move forward to full proposals.







# PEET Grant Program

Budget:

\$180k (\$90k per year) in direct costs available to the project team. The PEET Program provides additional centralized infrastructure support with a fixed value of \$120,000 in direct costs over the 2-year period. This support includes Epic builders and analysts, Health Data Compass analysts, community engagement, dissemination and implementation science support, grants management and PEET team support for project coordination with UCHHealth.

\$300k in total support in direct costs

Duration: 2 years

Major Goals: To demonstrate conduct of PEET-style projects in partnership with UCHHealth and develop governance and user guidance materials for others conducting these types of trials

All PEET awards are contingent upon funding made available to the CCTSI from National Center for Advancing Translational Science (NCATS)/National Institutes of Health (NIH).



# PEET Review Criteria

CCTSI PEET Review Panels will use the following criteria to evaluate proposed projects to see if they meet Demonstration Project minimum requirements:

1. Meets definition of a pragmatic-EHR embedded trial
2. Pragmatic clinical trial of interventions that are expected to impact patient health outcomes, with patient health outcomes assessed as either primary or secondary outcome measures
3. Not currently funded or underway
4. Conducted within UCHealth
5. Likely to be completed within 2 years of funding





# PEET Review Criteria: Novel EHR Integration Features

CCTSI PEET Review Panel will evaluate potential for demonstration of novel EHR integration features:

1. Cohort identification
2. Recruitment
3. E-consent
4. Randomization/group assignment
5. Intervention delivery (including connection to external tools/resources)
6. Real-time trial data dashboards
7. Final data collection based on data commonly available in the EHR
8. Patient/participant-reported outcomes
9. Other (please specify)



# PEET Review Criteria

## Innovation

Builds upon the existing evidence in an innovative way; enables innovative approaches and/or infrastructure for the PEET program.

## Rigor

Study design, methods, measures, data collection, and analysis are likely to lead to valid and generalizable conclusions. Includes UCHHealth EHR integration feasibility considerations, including LOS from clinical and community partners.

## Expertise

Investigator(s) have demonstrated background, training, and expertise, appropriate for their career stage, to conduct the proposed work; institutional resources are appropriate to ensure the successful execution of proposed work.



# Review Criteria for PEET Grant



CCTSI PEET Review Panels will use the following criteria to evaluate proposed projects to see if they meet PEET specific requirements:

1. Broad reach/potential for impact across UCHHealth regions
2. Ease of cohort identification
3. Experiences/engaged principal investigator and program manager (both of whom can commit substantive effort to the project)



# Additional Guidance: Projects Commonly Confused

## with PEET-Type Projects

**Quality Improvement: Impact of EHR note templates on provider documentation time**

**Design:** Internal study comparing documentation time before and after template rollout

**Why this is not PEET:** Not research (no randomization or external generalizability) and no patient-level outcomes assessed

**Correlational Study: EHR-based analysis of statin use and cognitive decline**

**Design:** Retrospective cohort study using EHR data to examine associations between statin prescriptions and cognitive outcomes

**Why this is not PEET:** Not a trial (no intervention tested)

**Epidemiological Study: Tracking diabetes incidence across zip codes**

**Design:** Using EHR data to map new diagnoses of type 2 diabetes by geographic region and demographic factors

**Why this is not PEET:** Not a trial (no intervention tested), and no patient-level outcomes accessed

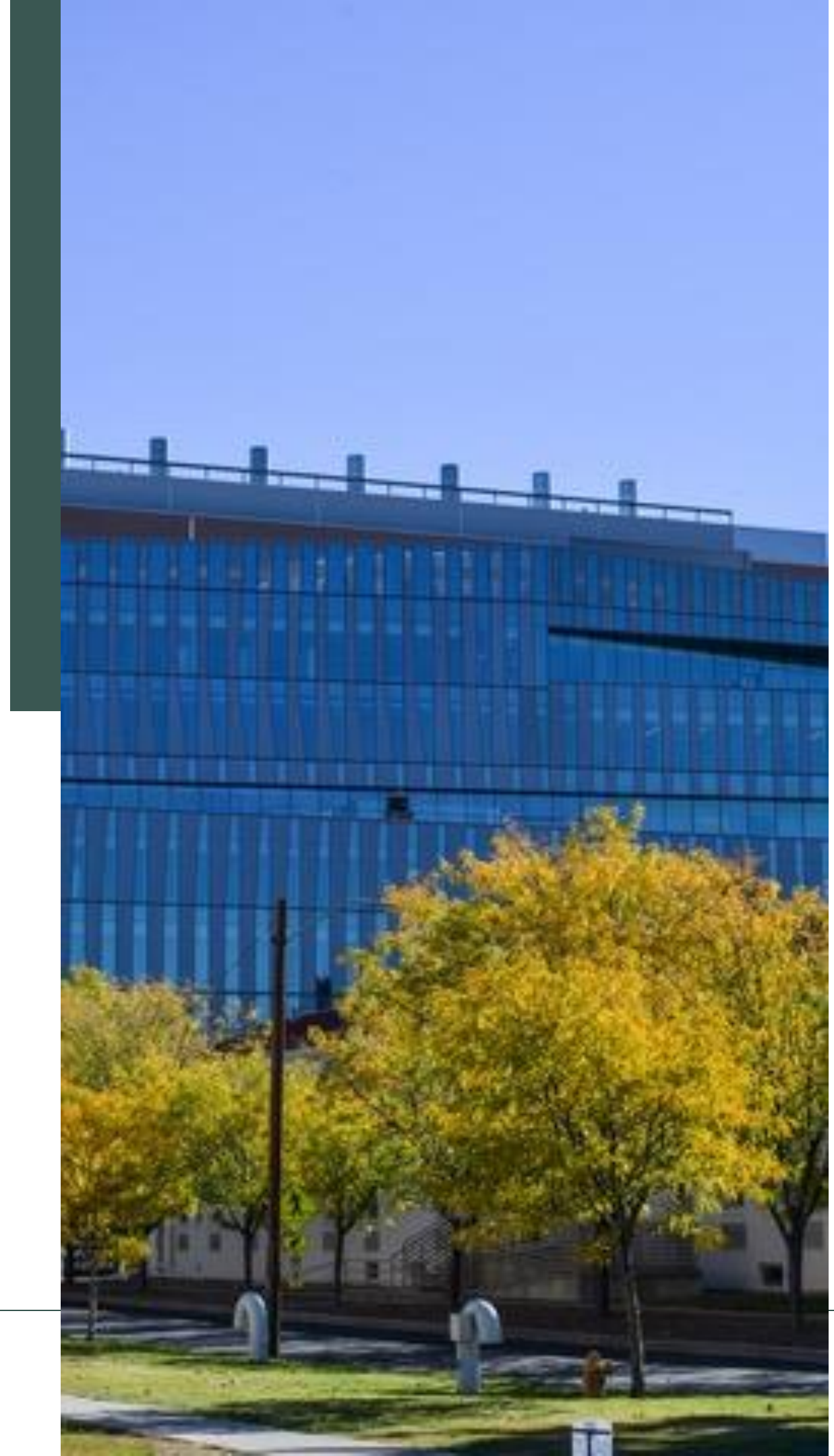




# LOI Process

Sarah Kautz, Ph.D.

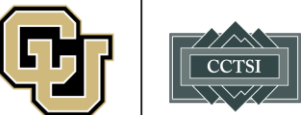
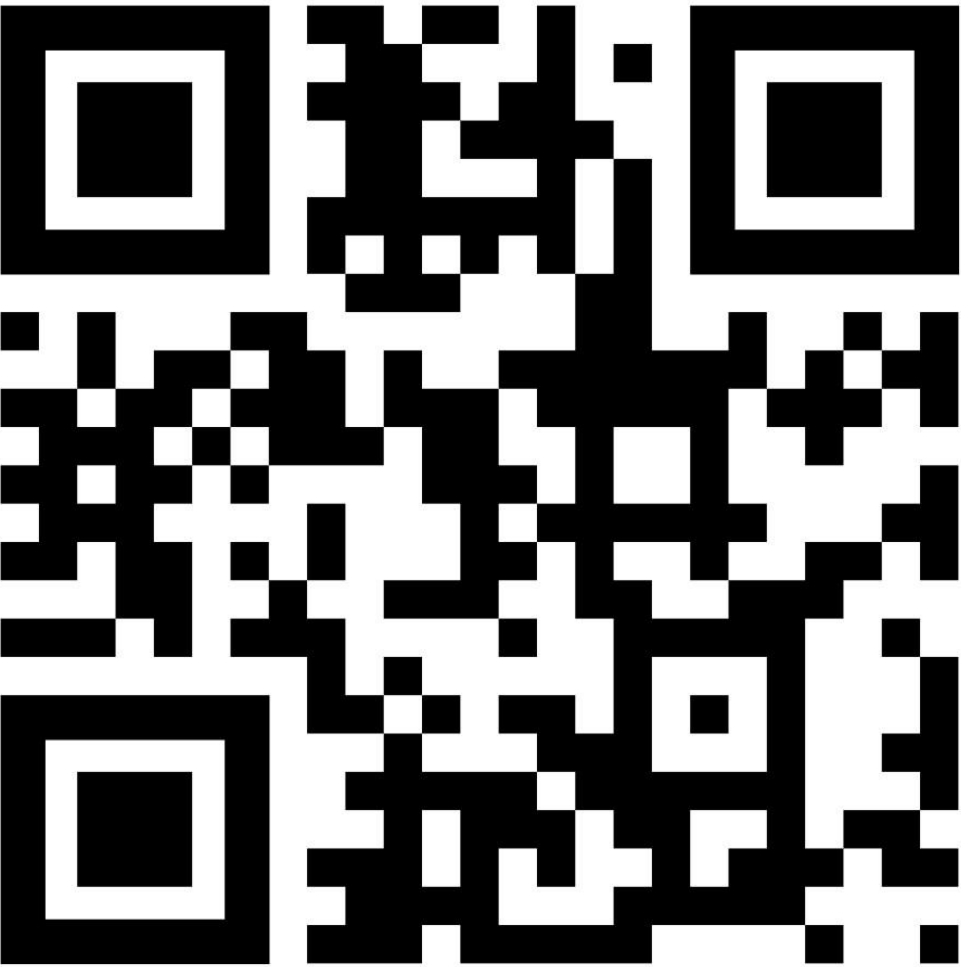
PEET Grant Program Coordinator





# How to Apply for the LOI

## Pragmatic Research Resources



University of Colorado Anschutz

Webmail | UCD Access | Canvas | Quick Links | Search

Research Studies Program

Find a Researcher (PROFILES)

Early Life Exposures Research Program (ELEP)

Dissemination and Implementation

Pragmatic Research Resources

How can we help you?

Pragmatic Trials Resource Navigation

Education

Consultations

Pragmatic EHR-Embedded Trials

PEET Program Overview

The goal of the CCTSI's Pragmatic Electronic Health Record (EHR)-Embedded Trials (PEET) program is to establish infrastructure and procedures to facilitate pragmatic trials through EHR integration. PEET addresses clinical and translational science challenges by reducing the burden on participants, clinicians, and researchers in research approval and conduct. This is achieved through partnerships with health system and university research regulatory, informatics, and data science units. Community engagement in designing and implementing patient-centered materials and protocols aims to build trust and increase trial participation. Scientific advisory on pragmatic trial design, dissemination and implementation science, and community engagement enhances research rigor. PEET supports multiple EHR integration features, including streamlined resources for decentralized clinical trials (e.g., e-consent, portal-based patient recruitment), cohort identification, randomization, intervention delivery, trial accrual monitoring, and data collection and analysis.

To develop and refine processes for local approval and conduct of pragmatic, EHR-embedded trials, the PEET program funds pilot demonstration projects. Requests for Applications (RFAs) are made available each year for 2-year pilot trials. Current priorities relate to studies conducted in adult populations within UCHHealth.

Request for Applications (RFA)

The RFA describes eligibility and application requirements

View the PEET 2026 RFA Here

Intent to Apply

Information & Resources

If you have any questions about eligibility or the application please [contact Sarah Kautz](#), PEET Program Coordinator.

View the 2026 Grant Application Checklist

View the 2026 Required Budget Template

View the PRECIS-2 Scores and Figures

Pragmatic Clinical Trials

Large-scale trials conducted in routine clinical care settings, involving:

2026 Key Dates

RFA Posted

November 17, 2025

Intent to Apply Opens

December 2, 2025

Intent to Apply Due

December 16, 2025 by 11:59 PM MT

Informational Call #1

December 10, 2025 at 8:30 AM MT

[Email Sarah Kautz to register for this informational call](#)

Informational Call #2

January 12, 2026 at 2:00 PM MT

[Email Sarah Kautz to register for this informational call](#)

Application Open

January 13, 2026

Applications Due

February 9, 2026 by 11:59 PM MT

Notice of Selection

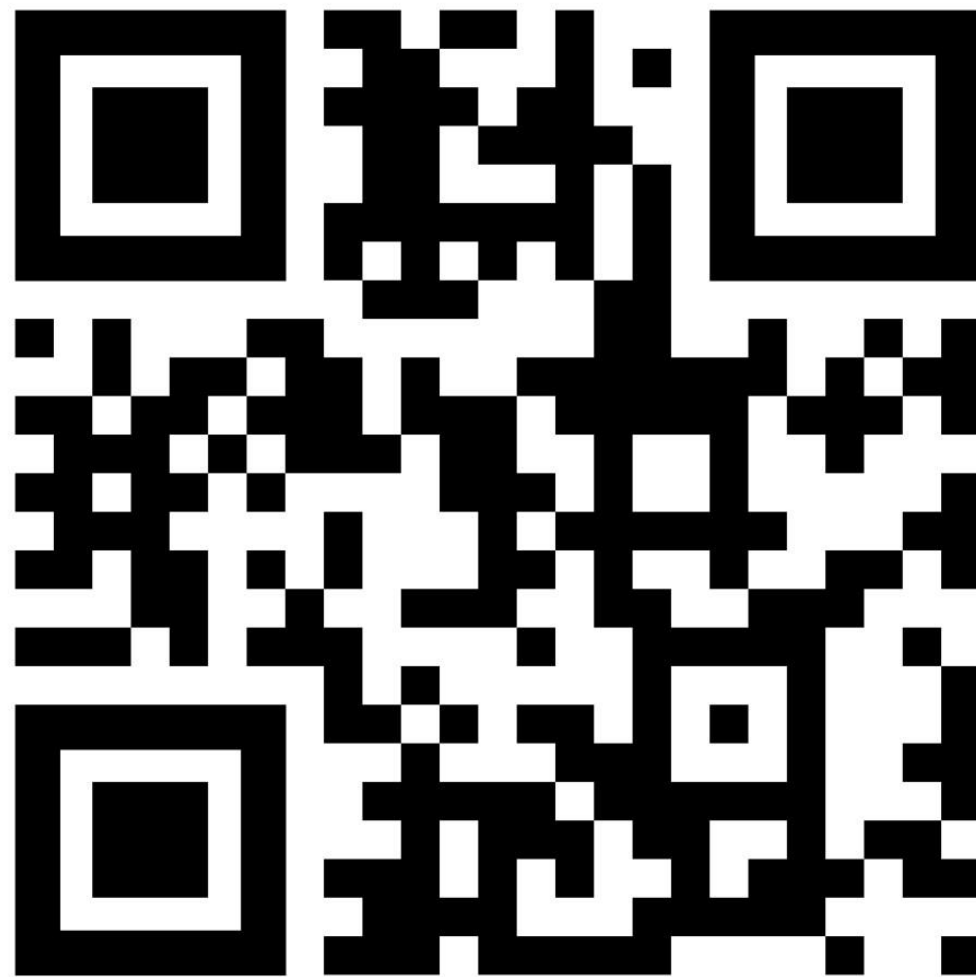
Mid to late June 2026

Award Start Date

August 1, 2026

# Intent to Apply

## Pragmatic Research Resources



- Descriptive title of proposed research
- Principal investigator name, credentials, faculty rank, CCTSI partnering institution, and department/division
- Multiple principal investigator name, credentials, faculty rank, CCTSI partnering institution, and department/division
- A PDF document including the project title, PI name, and a concise description of the proposed project that describes the research question and an overview of the study design (Word limit: 500 words)
- A checklist for PEET minimum requirements and EHR integration features
- **Mandatory Intent to Apply form by December 16, 2025, by 11:59pm**





# Questions?



## Email



[Sarah.Kautz@cuanschultz.edu](mailto:Sarah.Kautz@cuanschultz.edu)