

Program Evaluation

Goldie Komaie, PhD
CCTSI Evaluation Lead

cctsi.cuanschutz.edu



Colorado Clinical and Translational
Sciences Institute (CCTSI)



Leadership Team

Evaluation Personnel

- The Evaluation Center, CU-Denver



Goldie Komaie, PhD
Evaluation Lead



Grace Gonzalez
CTS-Pilots &
Workforce
Development



Angela Castillo
Community
Engagement, Workforce
Development



Chloe Hoff
Resources & Services,
Workforce Development

Strategic Goals

- 1. Goal:** Establish specific metrics to demonstrate local CTSA impact through rigorous program evaluation.
- 2. Goal:** Disseminate research results and best practices broadly.
- 3. Goal:** Integrate Quality and Process Improvement Program (QPIP) activities to continuously improve programs and CCTSI's impact.
- 4. Goal:** Participate in national-level efforts to develop and implement metrics to measure the impact of the CTSA program.



Year 3 Impact

- **New data and metrics for the following programs**
 - NIH mock study grant review programs
 - K12 career development program



CCTSI Mock Study and Grant Review Programs

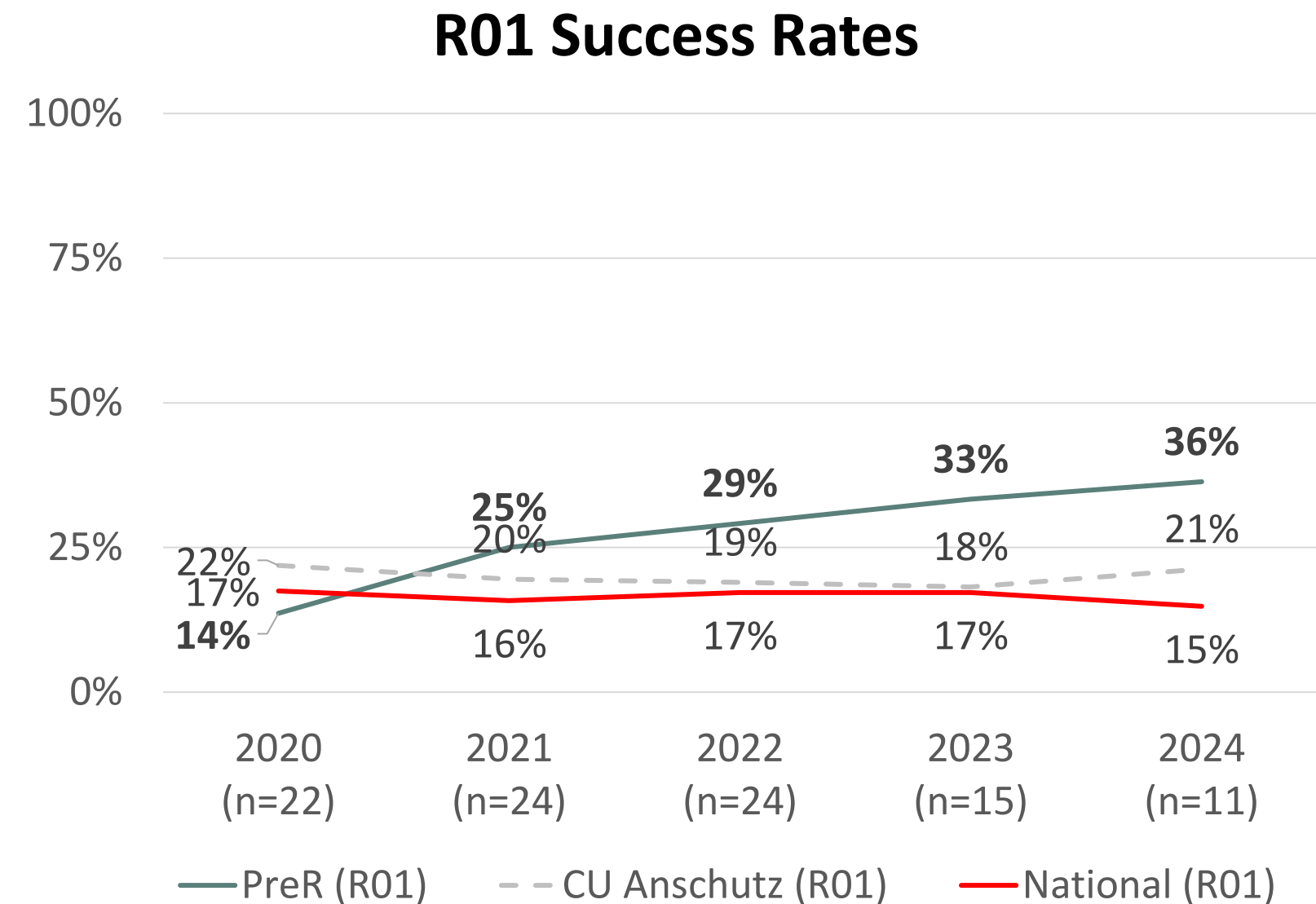
Comparison to CU Anschutz, and National Success Rates

- In 2026, CU Anschutz launched a Federal Funding Dashboard
- Developed and managed by the Office of Research Development and Strategy, Office of the Vice Chancellor for Research
- Dashboard provides an overview of the federal funding landscape, as well as the relative and historical performance of CU Anschutz in obtaining federal research grants

CCTSI PreR Grant Review Program

Comparison of PreR, CU Anschutz, and National Success Rates

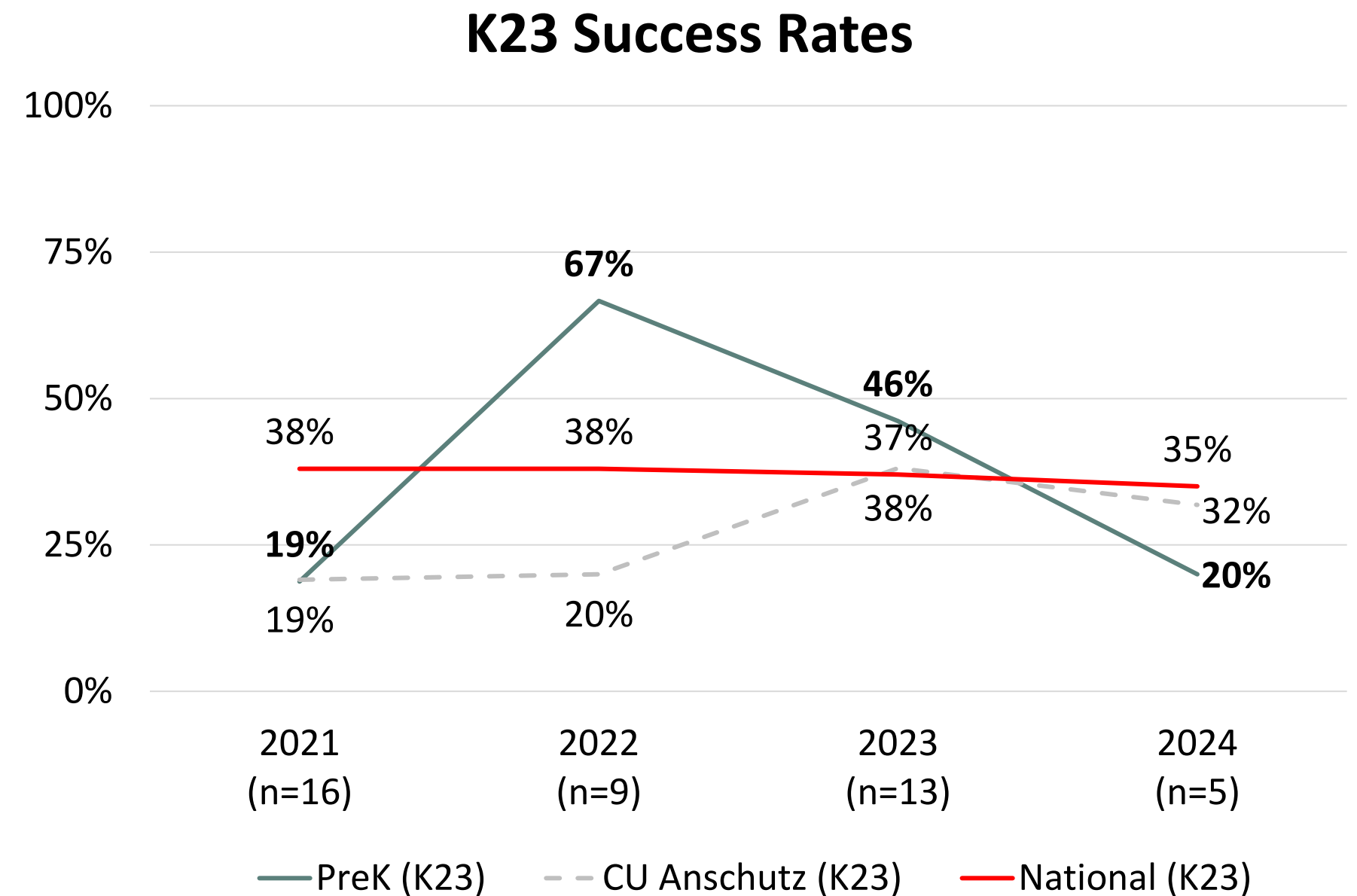
- Most PreR grants are submitted for R01.
- Displayed n's are PreR R01 submitted grants with a funding outcome.



CCTSI PreK Grant Review Program

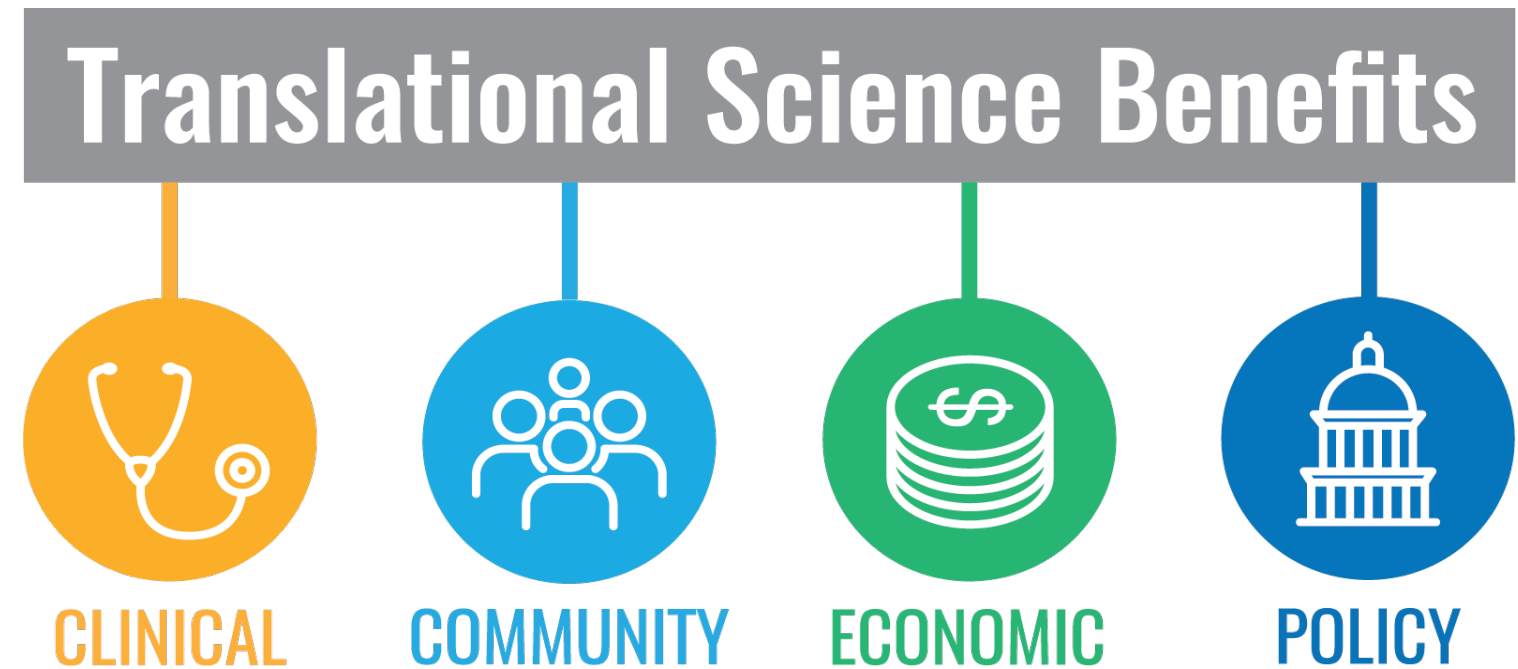
Comparison of PreK, CU Anschutz, and National Success Rates

- Most PreK grants are submitted for K23 and K01.
- K01 national success rates are not currently available on the Federal Funding Dashboard.
- Displayed *N*'s are PreK K23 submitted grants with a funding outcome.



Translational Science Benefits Model

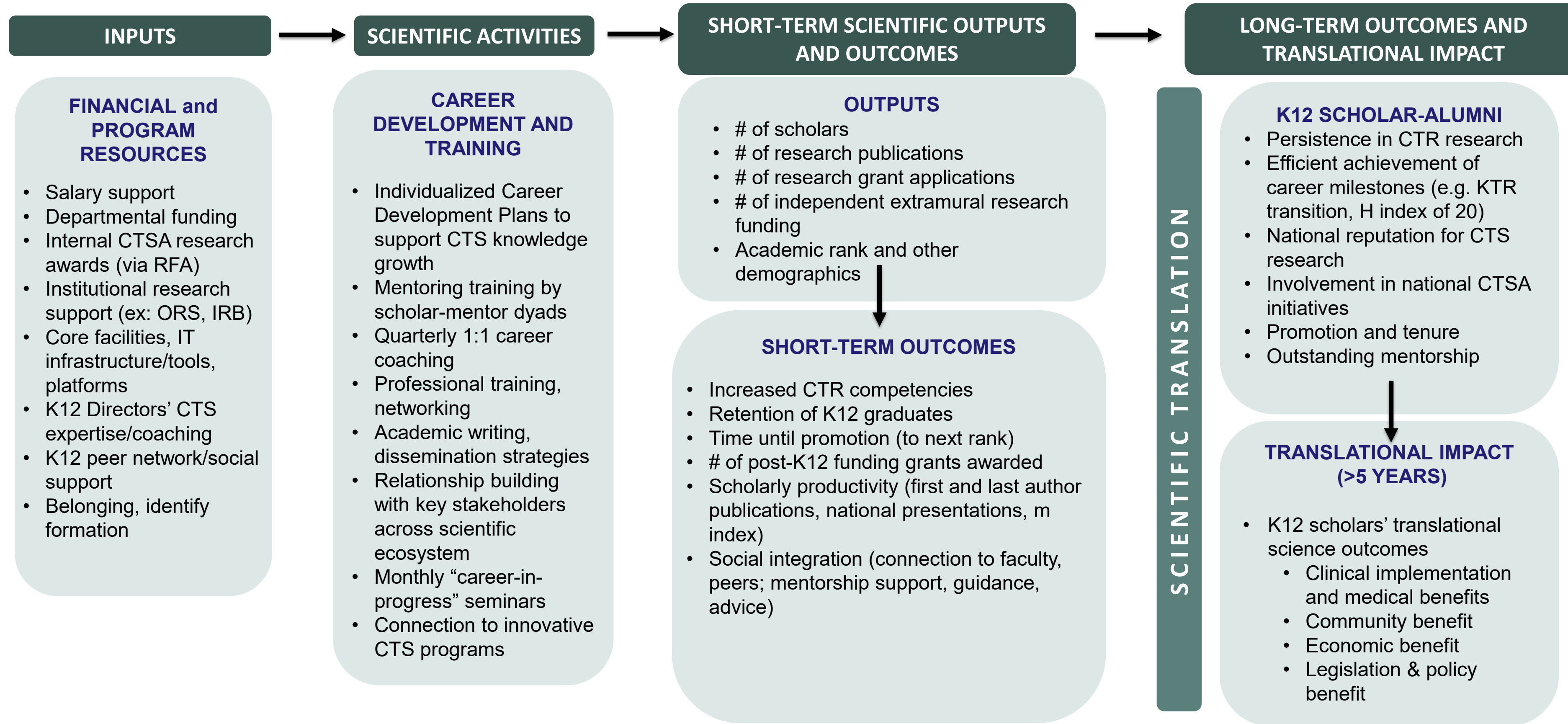
The Translational Science Benefits Model (TSBM) provides a set of metrics that can demonstrate broader benefits and impact of research for health and society.



- Clinical and Medical Benefits** (Procedures, guidelines, tools, and products)
- Community and Public Health Benefits** (Health activities, care, and promotion)
- Economic Benefits** (Commercial products, financial savings and benefits)
- Policy and Legislative Benefits** (Advisory activities, policies and legislation)

Source: Institute of Clinical & Translational Sciences at Washington University in St. Louis. Translational Science Benefits Model website. <https://translationalsciencebenefits.wustl.edu> Published February 1, 2019. Accessed Dec. 16, 2021.

Translational Science Benefits Model | K12 Program



Translational Impact of K12 Program

- Began collecting TSBM data with K12 program alumni in annual survey (2008-2024, $n=40$)
- Survey response rate of 74% ($n=29$)
- Did your research results in a clinical, community, economic, or policy benefit? Yes/No
 - 41% report ≥ 1 any TSBM benefit
- Specific benefit response options include yes, not yet, or no



CLINICAL



COMMUNITY

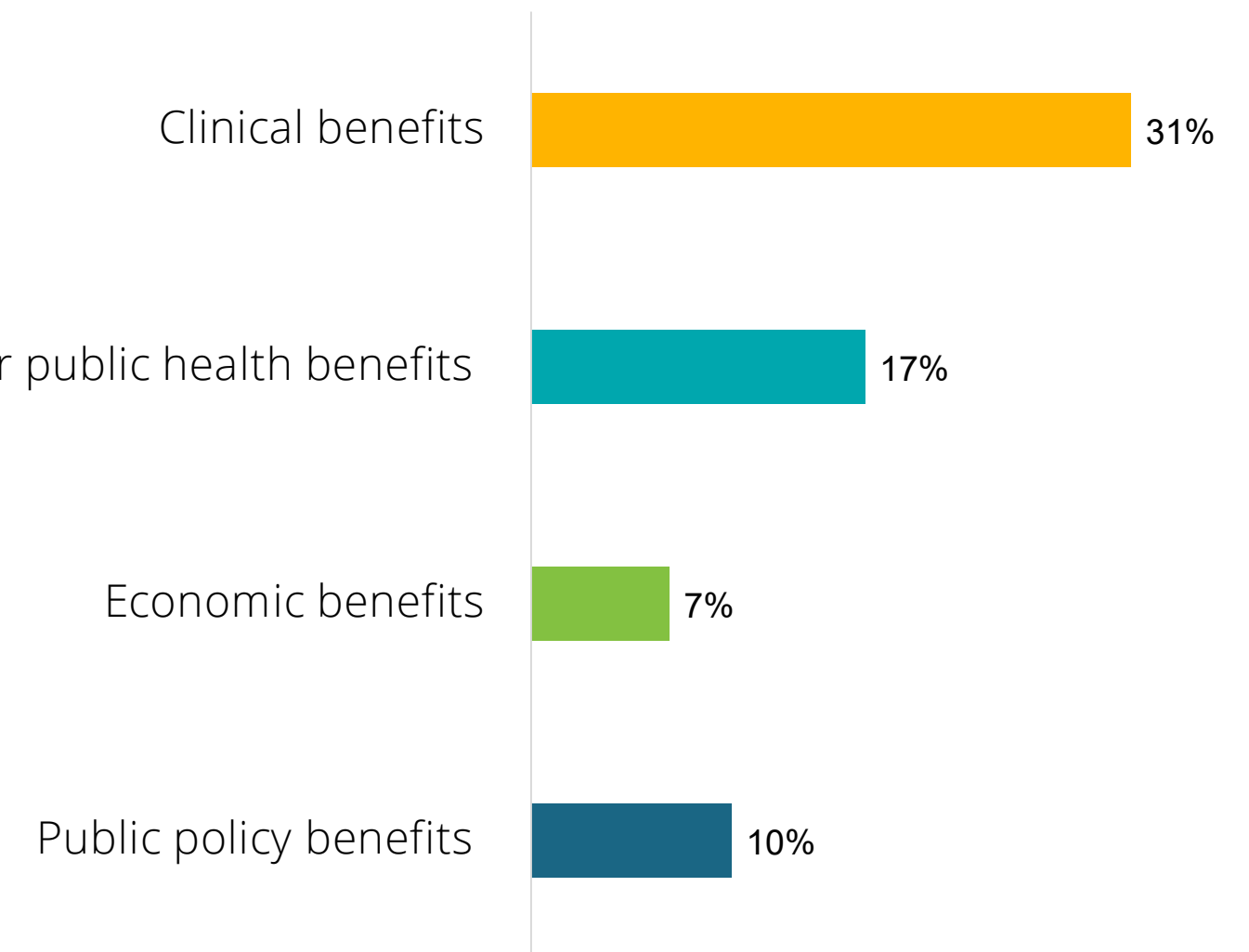


ECONOMIC



POLICY

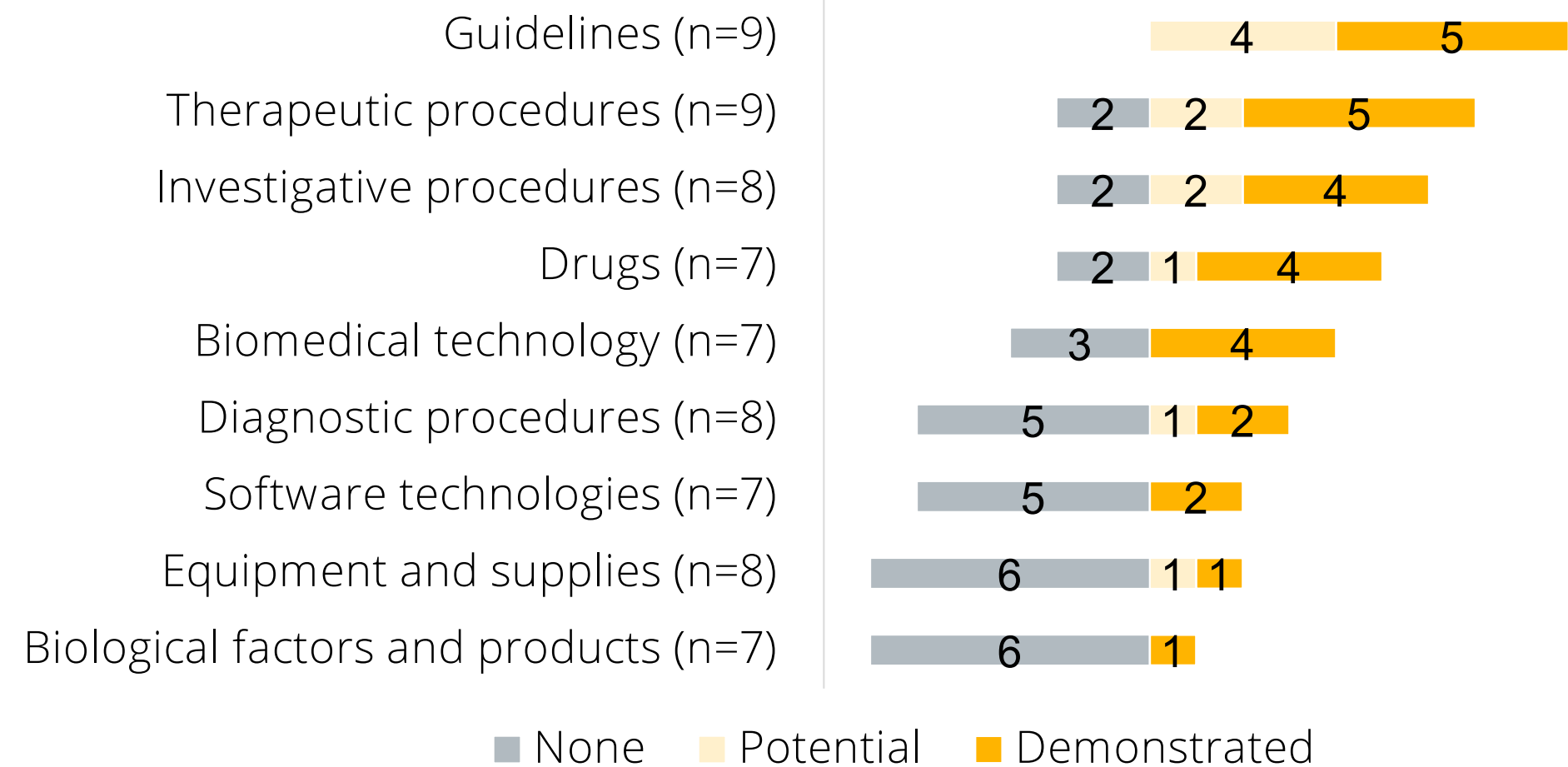
Demonstrated translational benefits of research among K12 program alumni



K12 Alumni – TSBM Survey Findings

- 31% indicated that their research has led to a clinical and medical benefit
- Most common benefits included clinical guidelines, therapeutic procedures and investigative procedures
- Alumni reported a mean of 3.1 clinical benefits

Demonstrated and potential clinical benefits of research among K12 program alumni



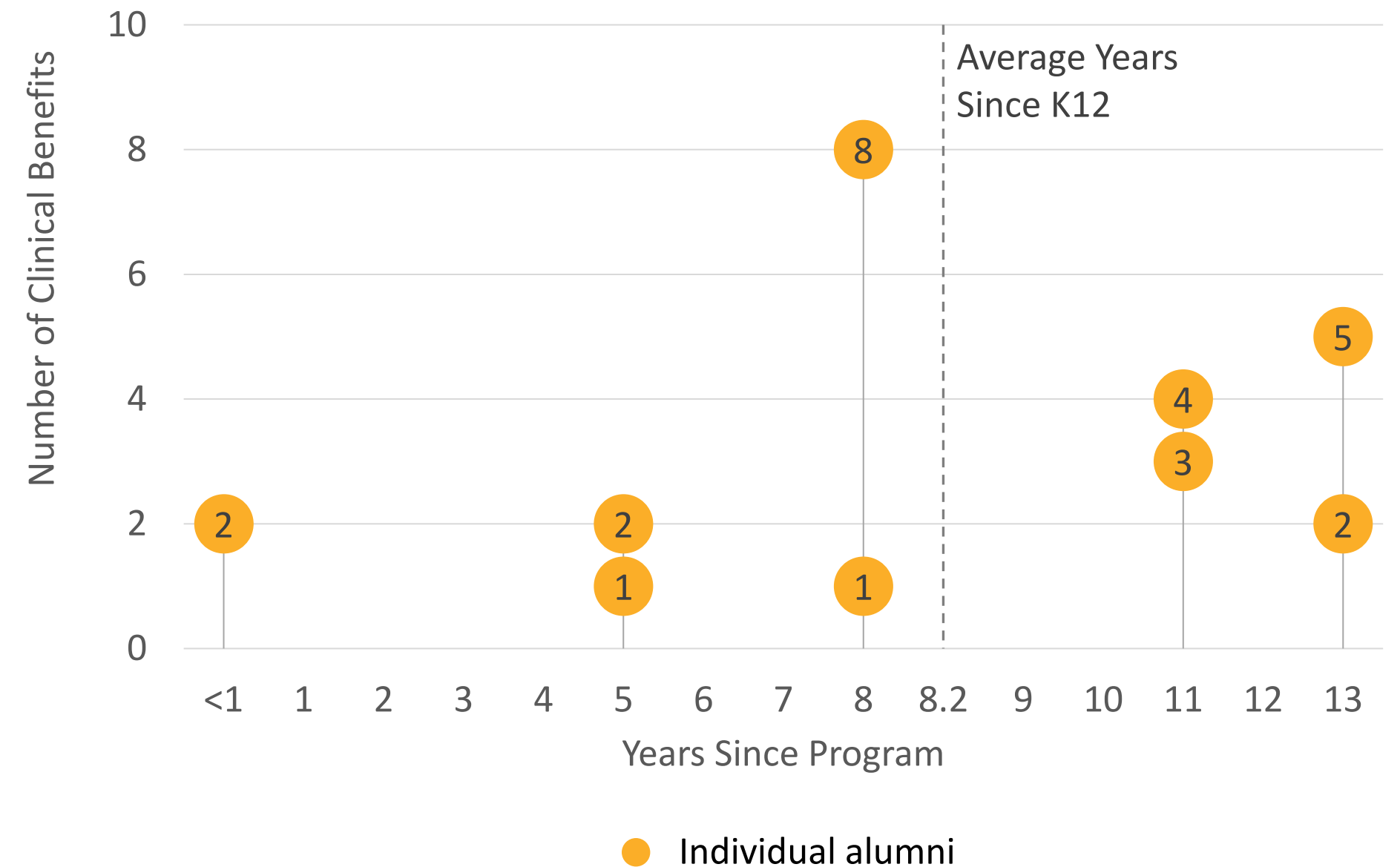
K12 Alumni – TSBM Survey Findings

Delaying Observation Time Might Better Reflect Time to Realized Benefits

Average years since K12

- Alumni who reported a clinical benefit - 8.2 years
- Alumni who reported no clinical benefits - 5.7 years

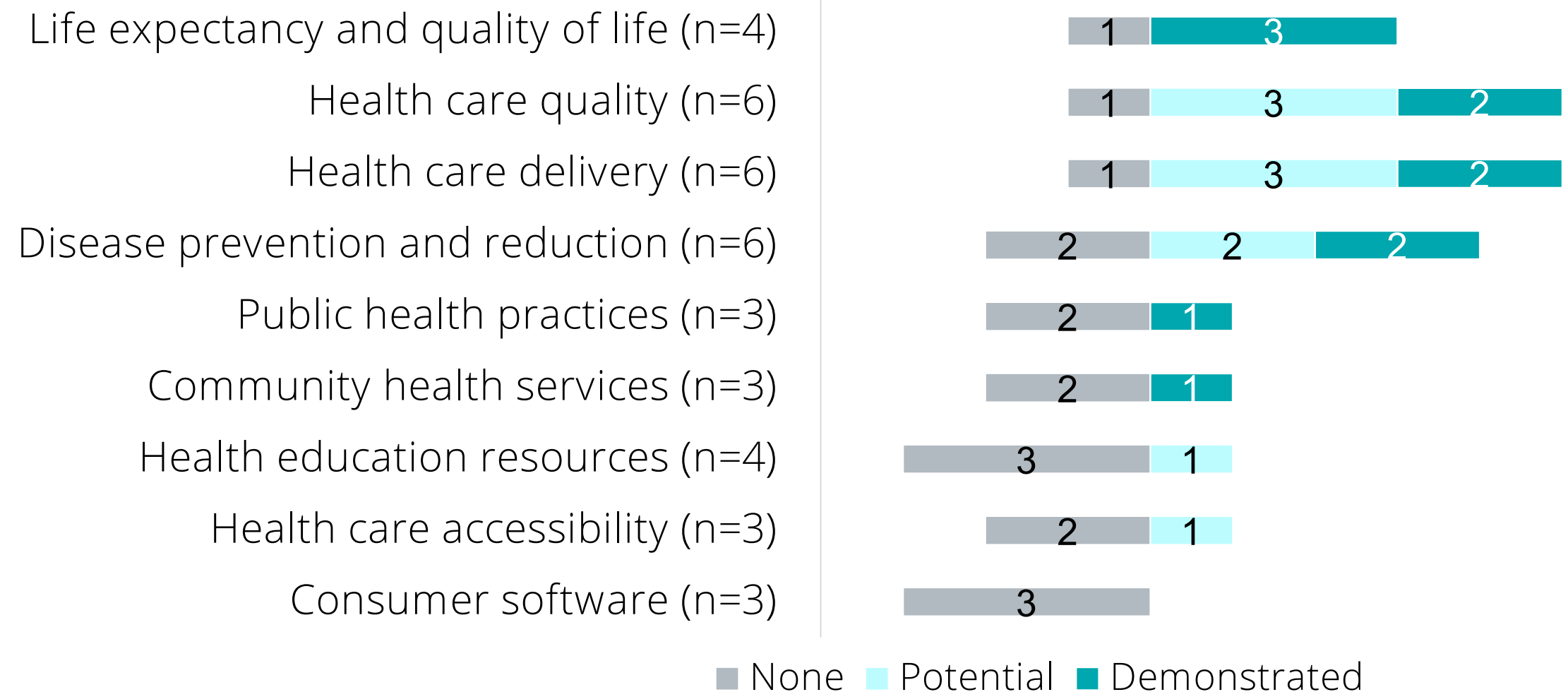
Self-Reported Clinical Benefits by Years Since K12 Participation



K12 Alumni – TSBM Survey Findings

- 17% reported their research has had a community and public health benefit
- Most common benefits were life expectancy and quality of life, health care quality, health care delivery, and disease prevention and reduction
- Alumni reported a mean of 2.2 benefits

Demonstrated and potential community and public health benefits of research among K12 program alumni



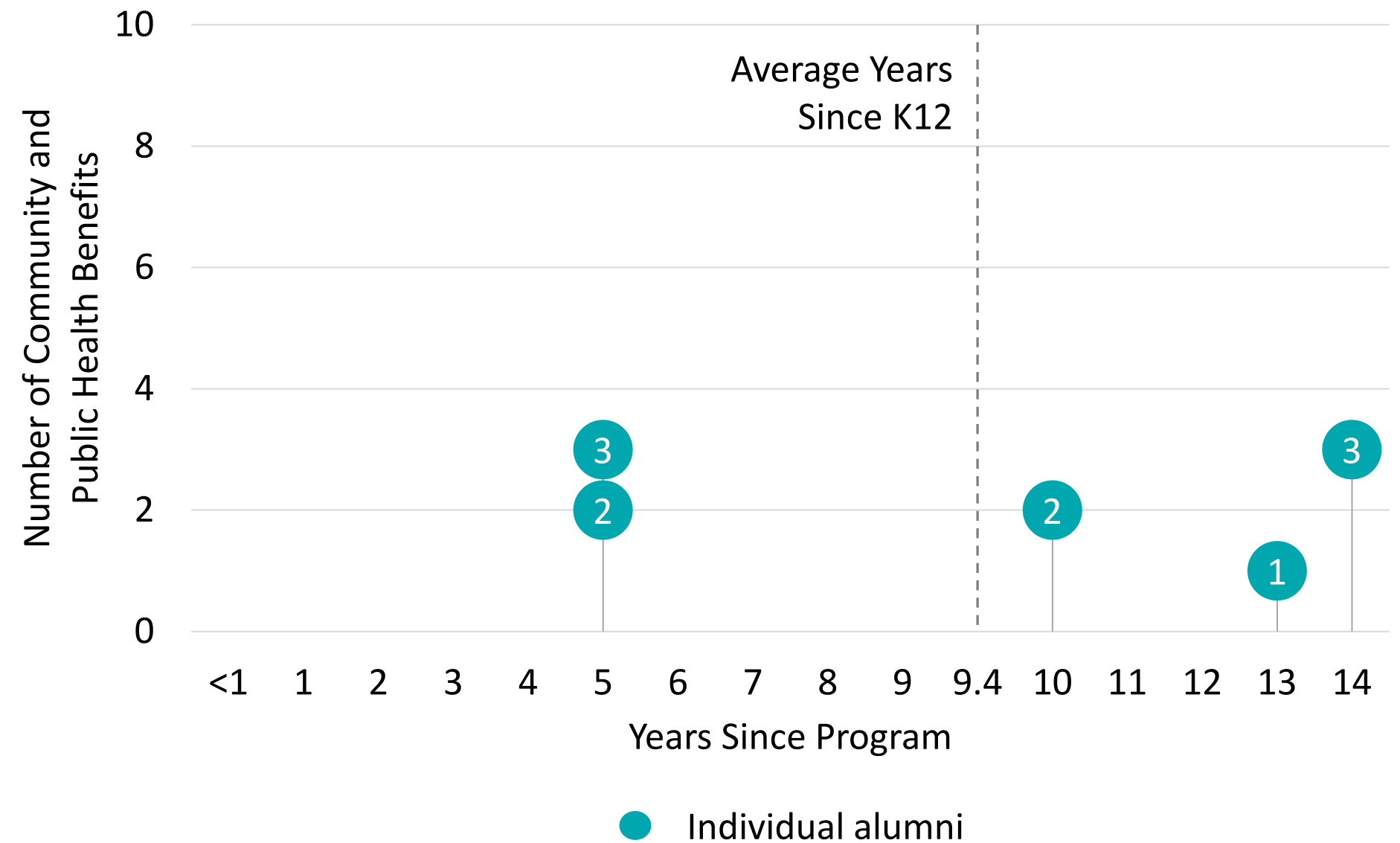
K12 Alumni – TSBM Survey Findings

Delaying Observation Time Might Better Reflect Time to Realized Benefits

Average years since K12

- Alumni who reported a community and public health benefit – 9.4 years
- Alumni who reported no community and public health benefits - 5.8 years

Self-Reported Community and Public Health Benefits by Years Since K12 Participation



Year 4 Plans

- **Continue to incorporate TSBM across all CCTSI cores and programs (modules)**
 - Meet with program leads
 - Evaluation team to revise logic models
 - Select exemplar cases for stories of impact

